

ICOM[®]

INSTRUCTIONS

CLONING SOFTWARE

CS-R20

■ Getting started

- ◇ This cloning software is designed to perform data setting and cloning for the IC-R20 communications receiver.
- ◇ HELP WINDOW: CS-R20 has a help window to describe functions and operation.

■ System requirements

To use this program, the following hardware and software are required:

- USB port
- Microsoft[®] Windows[®] 98/98SE/Me/2000/XP
- OPC-1382 cloning cable

NOTE:

- The USB driver must be installed to use the CS-R20 cloning software. See the IC-R20 instruction manual for the driver installation details.
- Depending on your Windows[®] system files, the PC may require rebooting. In this case, repeat the installation from the beginning.

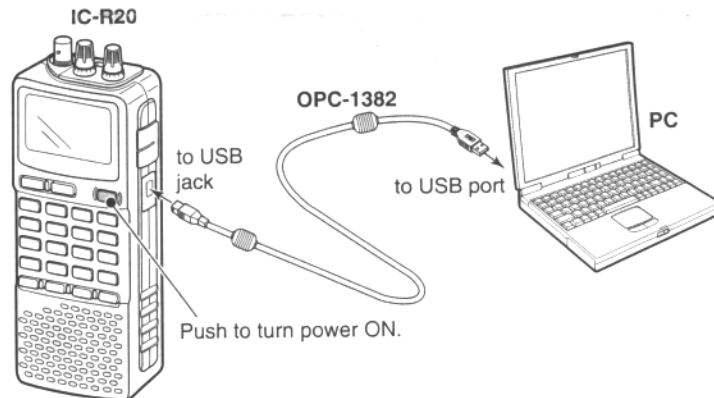
■ Software installation

◇ Installation

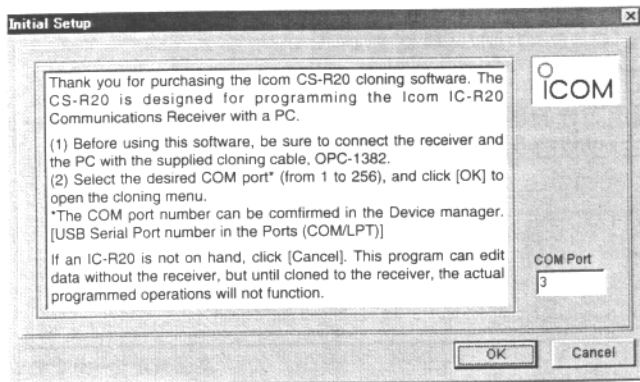
- ① Boot up Windows[®].
 - Quit all applications when Windows[®] is running.
- ② Insert the CD into the appropriate CD drive.
- ③ Select 'Run' from [Start] menu.
- ④ Type the setup program name with full path name, then press [Enter] key. (e.g. D:\csr20\Setup.exe [Enter])
- ⑤ Follow the prompts.
- ⑥ Select the display language type from "English" or "Japanese".
- ⑦ Enter the product ID number with following manner.
 - ID number: 270201-(6 digit serial number)
 - e.g. the serial number on the CD is 000101, enter "270201-000101" as the ID number.
- ⑧ Program group 'CS-R20' appears in the 'Programs' folder of the start menu.

■ Connections

- /// All cloning operations are performed from the computer's keyboard—the operation required on the receiver side is;
- /// Turning power ON the receiver.

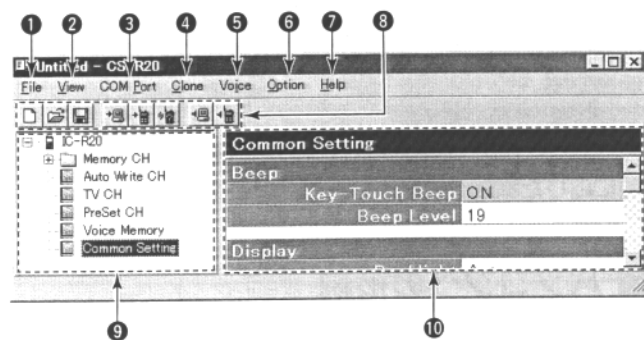


■ Initial Setup screen



After the CS-R20 starting up, the Initial Setup screen appears. Read the Initial Setup instructions, and enter the desired COM port number (from 1 to 256), then click <OK>, or <Cancel> to continue the programming without the receiver.

■ Screen menus description



1 FILE MENU [File]

Used for saving memory channel contents, printing the pre-programmed information or quitting the program, etc.

2 VIEW MENU [View]

- Selects the displayed font size.
- Turn the Toolbar ON or OFF.

3 COM PORT MENU [COM Port]

Click to display the COM port setting dialog box.

4 CLONING MENU [Clone]

Click to display cloning menu and cloning information dialog box.

5 VOICE MENU [Voice]

Used for reading/writing the voice memory contents, etc.

6 OPTION MENU [Option]

Select the preset TV channel for your convenience. Preset TV channel data automatically transfer into the TV CH memory.



7 HELP MENU [Help]

Click to display help contents and cloning software revision information.

8 TOOL BAR

Shortcut buttons appear on the tool bar when clicking the tool bar function in the [View] menu.

9 TREE VIEW screen

Click the folder icon (+) which you want to edit.

10 PROGRAM screen

Displays the programmable items (Memory CH information, Common settings, etc.).

■ Programming information

• We recommend that you should read all receiver cloning data into the PC before starting to edit with this software to prevent the accidental total loss of data currently programmed.

• Double click the desired cell in the memory channel screen directory, or right-click the cell then click [Edit...].

- You can click the pull down menu to select and change the channel setting depends on the item.

- You can edit it directly.

- Click [Help] to display the help screen for the item.

Edit...	Enter
Copy	Ctrl+C
Paste	Ctrl+V
Up	Ctrl+Up
Down	Ctrl+Down
Clear	
Delete	Del
Insert	Ins
Help	

(Edit menu)

■ Memory CH

The 'Memory CH' window allows you to edit the channel information.

◇ All

Total of 1050 memory channels including 50 scan edge memory channels (25 pairs) are available for storage of often-used frequencies, tuning steps, operating mode, etc.

◇ Bank CH

Total of 26 memory banks (A to Z) are available for usage by group, etc. Up to 100 channels can be assigned into a bank.

■ Auto Write CH

Auto Write CH screen shows the detailed information for received signals that are automatically programmed during the auto memory write scan.

■ TV CH

The TV CH screen shows the pre-programmed frequencies, mode, channel name and skip conditions when a channel system is selected from the "Preset TV CH" in the [Option] menu.

■ PreSet CH

Total of 10 PreSet channels are available for previously set as the channel information. The contents of the PreSet channel are not cleared by the reset operation.

■ Voice Memory

The Voice Memory screen shows the total of 32 voice memory information as Name, Quality and Time. And set the recording quality, REC Remote, and playback speed.

■ Common Setting

Commonly set items for programming infrequently changed value or conditions of functions. In addition, Expand Set mode items can be set for programming even more infrequently changed value or conditions of functions. And enter up to 16 characters cloning comment.

NOTE: The above instructions are for reference only. Please refer to the HELP file of the cloning software for functions or setting details.

Icom, Icom Inc. and the ICOM logo are registered trademarks of Icom Incorporated (Japan) in the United States, the United Kingdom, Germany, France, Spain, Russia and/or other countries.

Microsoft and Windows are registered trademarks of Microsoft Corporation in the United States and/or other countries.

Icom Inc.

1-1-32 Kamiminami, Hirano-ku, Osaka 547-0003, Japan

Count on us!

A-6348H-1G-① Printed in Japan
© 2004 Icom Inc.