

LABORATORY GRADE

SWITCHING MODE PROGRAMMABLE POWER SUPPLY with PC INTERFACE

SDP SERIES

OPERATION MANUAL



CONTENTS

1.	IMPORTANT SAFETY INSTRUCTIONS & PRECAUTIONS FOR USE	<i>P.1</i>
2.	SPECIFICATIONS	<i>P.2</i>
3.	INTRODUCTION	<i>P.2</i>
4.	CONTROLS & INDICATORS	<i>P.3</i>
5.	GENERAL OPERATING PRINCIPLE	<i>P.4</i>
6.	OPERATING INSTRUCTIONS	
	6.1. SETTING OF OPERATION MODE	<i>P.5-6</i>
	6.2. MANUAL OPERATION MODE	<i>P.7</i>
7.	USING THE PRESET FEATURE	<i>P.8</i>
	7.1. OPERATING THE TIMED PROGRAM	<i>P.9</i>
	7.2. RUNNING THE TIMED PROGRAM	<i>P.10-11</i>
8.	MAINTENANCE	
	8.1. TROUBLE SHOOTING	<i>P.11</i>
9.	PC INTERFACE CONTROL USER MANUAL	
	9.1. INTRODUCTION	<i>P.12</i>
	9.2. SYSTEM REQUIREMENT AND INSTALLATION	<i>P.12</i>
	9.3. RS-232 INTERFACE OPERATION	<i>P.12-18</i>
	9.4. RS-485 INTERFACE OPERATION	<i>P.18-22</i>

1. IMPORTANT SAFETY INSTRUCTIONS

1. Do not use this apparatus near water.
2. Clean only with dry cloth.
3. Do not block any ventilation openings.
4. Do not install unit near any heat source or heating emitting devices.
5. Prevent the power cord from being walked on or pinched.
6. Unplug this unit during lightning storms or when unused for long periods of time.

PRECAUTIONS

1. The unit must be used within its specified range.
The rated input voltages can be found on the rating label at the back the unit.
Before plugging into the AC supply, check with the rating label.
2. This unit has a built-in Tracking O.V.P.(Over Voltage Protection) feature. In the event of the output voltage becoming 10% greater than the set value, the O.V.P. will be triggered and the output power will be cut off and > **FAULT** < warning appears.
When you get this warning, switch off the unit and remove all loading.
If you switch the unit back on again it should resume normal operation.
In the event this problem persists , the unit must be investigated by your agent.
3. Only use the supplied software and optional accessories with this unit.
4. Refer all servicing to qualified service personnel.

Warning !

Model SDP-2603, the maximum output voltage is up to 60Vdc.

It may be hazardous to touch metal part of the output terminals.

User must avoid touch live metal part of the output terminals.

2. Technical Specifications of SDP series Power Supplies

Specifications	SDP-2210	SDP-2405	SDP-2603
Output Voltage:	1-20VDC	1-40VDC	1-60VDC
Output Current:	0-10A	0-5A	0-3.3A
Ripple & Noise (P-P):	25mV		
Load Regulation:	0.5% + 200mV	0.5%+100mV	0.5% +100mV
Line Regulation:	50mV		
Input Voltage :	90 - 265 VAC, 50Hz / 60Hz		
Display Meter:	4 digit - display LCD ammeter, voltmeter and power meter		
Meter's Accuracy:	1.5% + 2 counts		
LCD Module Back light :	dim 48 x 6mm		
Cooling System:	thermostatic control fan		
Protection Devices:	Over Temperature, Tracking OVP		
Approvals:	CE		
Dimension (WxHxD):	193 x 98 x 215 (mm)		
Weight:	3 KG		
Accessory:	PC Windows™ software, RS-232 cable and user's manual		
Remarks:	Remote PC preset, activate and data logging Optional RS-485 Adapter available Adjustable upper voltage limit. Power factor correction		

3. INTRODUCTION

This series of laboratory grade, switching mode, programmable power supplies are ideal for repetitive test routines in R&D, Production, Product Evaluation and various applications.

Information appearing on the large back-lit LCD makes the panel controls so simple and easy to use in spite of its sophisticated features.

Because of the MCU, (Micro-Controller Unit) and the related software, user re-calibration without opening the casing is another added bonus.

When used with a standard PC, the supplied user friendly software and the built in RS-232 & RS-485 interface provide 2 way communication thus would really enhance the unit's functionality.

Data logging with color graphic display in adjusting range voltage, current, watt, and time periods are valuable tools in data analysis.

With RS-485 and the optional interface cable adapter, one PC can do remote control and data logging as many as 31 power supplies.

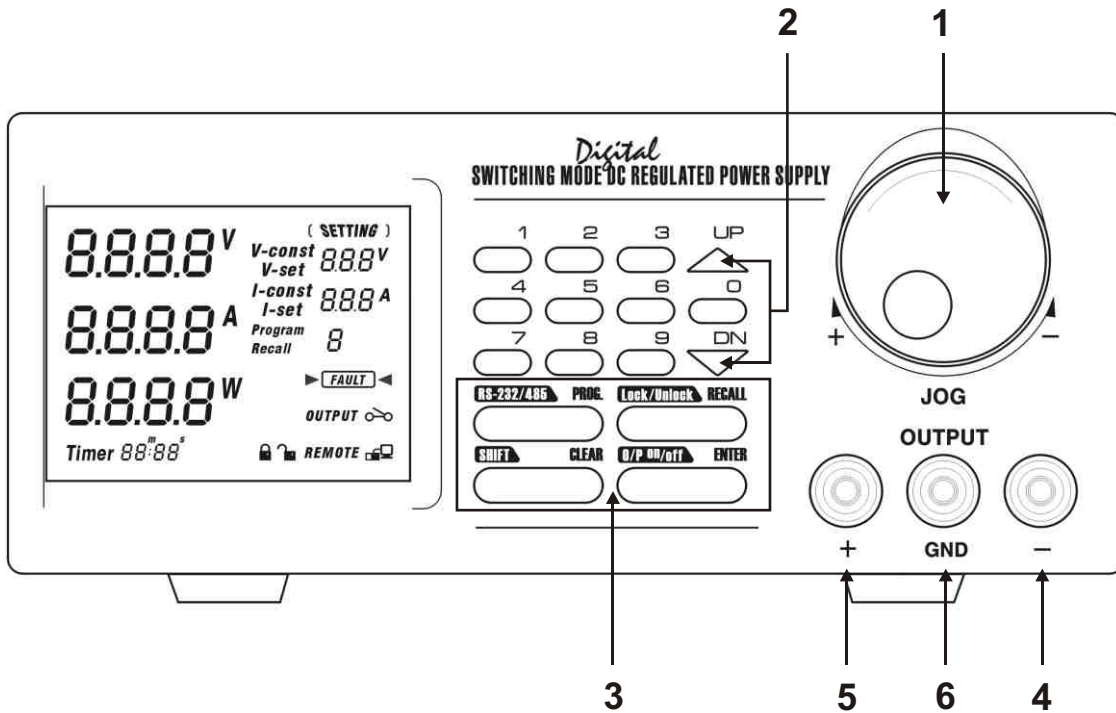
More powerful software will be developed to meet the ever-changing demands in applications.

This series of power supplies have obtained the stringent safety approval EN-61010 for scientific & laboratory equipment and the EMC 55011 for scientific, industrial and medical radio-frequency equipment of the European EMC directive.

Please keep this manual in a safe place and contact your dealer for any special requirement in application software or other feature.

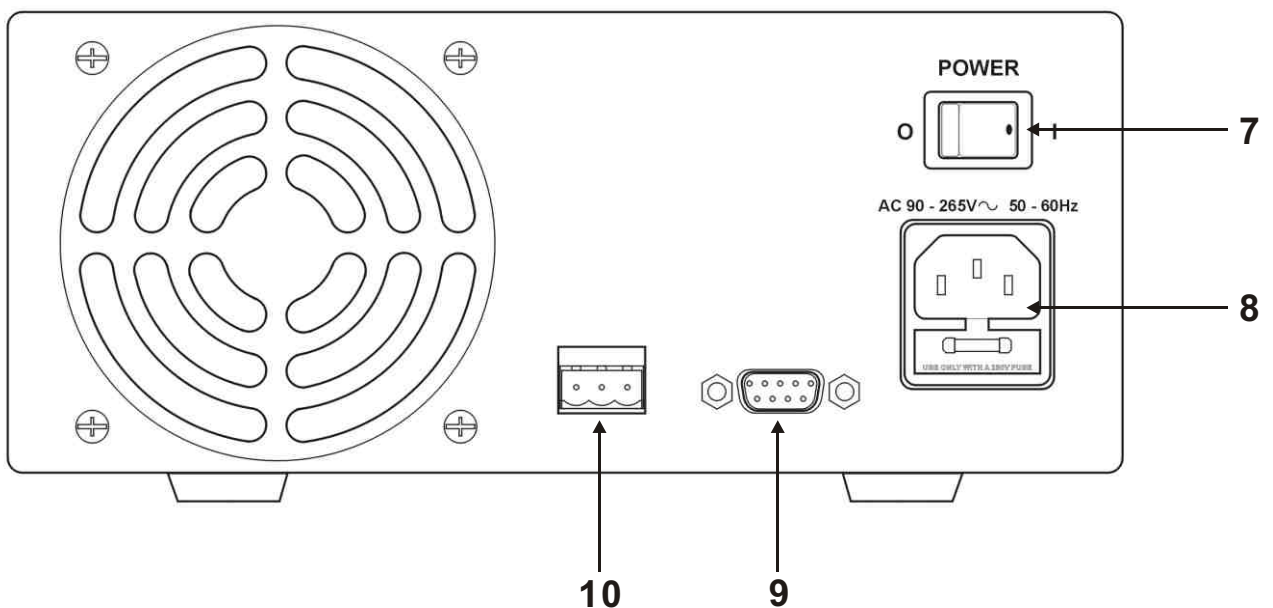
4. Controls and Indicators

Front Panel



1. JOG DIAL
2. UP & DOWN KEY
3. DUAL FUNCTION CONTROL KEYS
4. BLACK COLOR NEGATIVE POLARITY OUTPUT TERMINAL
5. RED COLOR POSITIVE POLARITY OUTPUT TERMINAL
6. GREEN COLOR GROUND TERMINAL (connected to chassis)

Back Panel



7. POWER SWITCH
8. AC 90 - 265VAC POWER SOCKET WITH INPUT POWER FUSE
9. RS-232 PORT
10. RS-485 PORT

5. General Operation Principle

There are four operation methods for this unit;

- Manual Operation,
- Presets,
- Timed Program
- PC Interface mode.

The large Liquid Crystal Display will guide you through various operations/procedures interactively once you understand the operation principle.

There are 4 Dual Function Control Keys  for various operation modes and input states of the unit.

To change/set operation mode (**output on /off, key lock & etc.**), in most cases, you need to use two Dual Function keys to complete the operation.

To change input values of various settings (voltage, current, preset number, cycles, time period & etc.), use the ENTER key to get ready and to confirm the new settings.

The Liquid Crystal Display

The backlit display shows both the preset and actual output voltage , current levels at the output terminals ; and status of constant current (**CC**) or constant voltage (**CV**) mode. Look out for new symbols appearing on the display while doing inputting. They will guide you and remind you of the correct procedure.

Example: Inputting values of various settings

When a new setting (voltage, current, time periods & etc.) is ready for inputting, the hinting appearing symbol of the related setting will be appearing on the display. After key in the required value, always follow by pressing **ENTER** to confirm or to complete the operation.

Presets and Timed Subprograms

This unit has the capacity to store 10 programs.

Program 1 to 9 is for 9 sets of Presets of voltage and current.

The program 0 is reserved for the 20 timed subprograms, each is capable of storing 1 second to 99minutes operation period with its preset voltage and current levels.

The timed subprograms can be set to operate repeatedly in sequence from 1 to 9999 cycles.

6. OPERATING INSTRUCTIONS

6.1 Setting of Operation Modes

Output On/Off Mode

1. Press **SHIFT** key.
The display will show **Sh:Ft.**
2. Press (**O/P On/Off**) key within 3 seconds.
Watch for the appearing on/off symbol in the display to confirm your setting, otherwise repeat the above procedure.

Lock/Unlock the Keypad and Jog Dial

1. Press **SHIFT** key.
The display will show **Sh:Ft.**
2. Press (**Lock/Unlock**) key within 3 seconds.
Watch for the appearing **Lock/Unlock symbol** in the display to confirm your setting, otherwise repeat the above.

PC Interface RS-232/RS485

1. Press **SHIFT** key.
The display will show **Sh:Ft.**
2. Press (**RS232/485**) key within 3 seconds.
3. Select desired PC Interface by pressing the (**RS232/485**) key.
4. For RS 232 press **ENTER** to confirm setting.
5. For RS 485 enter 485 address followed by **ENTER** to confirm setting.

Upper Voltage Limit Setting

This feature limits the upper level setting of output voltage to prevent inadvertent setting of high output voltage which may damage your application.
The value of this upper voltage range limit will be retained until further reset.

Precaution:

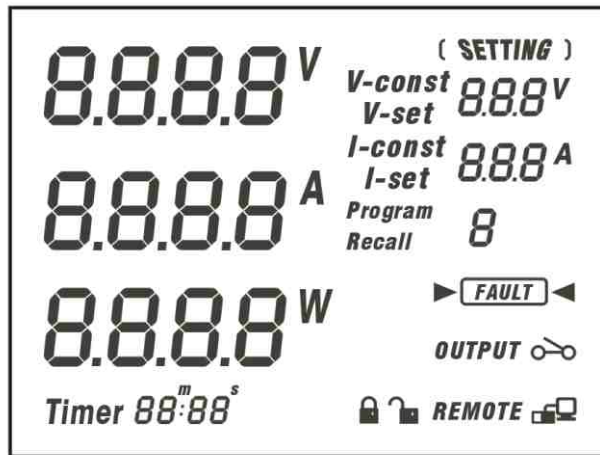
Reset back to the maximum rated voltage of the unit is recommended to avoid false fault report of the unit.

1. Press **SHIFT** and follow by 0 key.

2. The display will show  and the present upper voltage limit.

3. Input your desired voltage and follow by **ENTER** to confirm.
4. Recheck setting by repeating 1.

CONTROL SYMBOLS ON DISPLAY



Showing output terminals ON/OFF state.



Showing keypad & jog dial are in Locked (de-activated) or Unlock (activated) .



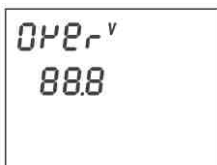
Unit is ready for or already linked up with computer.

WARNING SYMBOL ON DISPLAY



Over Voltage Protection is activated. Take off all load. See Precaution at 1st page

UPPER VOLTAGE LIMIT SYMBOL ON DISPLAY



Press SHIFT then 0 Key .
The display on LCD shows unit ready for input of Upper Voltage Limit Range
And the original set voltage.

STANDARD OPERATION SYMBOLS

V-const

Constant voltage mode showing set voltage

V-set

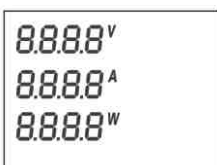
This only appears when voltage level is ready for setting.

I-set

This only appears when current level is ready for setting.

I-const

This only appears when unit is in CC (constant current) mode.



They show the actual volts, amperes and watt at the output terminals.

6.2 Manual Operation Mode

In the manual operation mode, once the voltage and current levels have been set, the unit will keep these settings even after unit has been switched off until further reset.

There are 3 ways to input a setting;

1. By the **JOG WHEEL**.
2. By the **UP** or **DOWN** key.
3. By the **Key Pad**.

For any wrong input, e.g. out of specification values, display will show "**OUT OF RANGE**" for about 3 seconds, then returns to its previous settings and ready for correct new input.

Manual Setting of Voltage and Current by Jog Wheel

1. To change the voltage setting, just rotate the Jog Wheel, no other step is needed.
2. To change the current setting, press **ENTER** *twice*, the LCD will show **I-set**, rotate Jog Wheel for desired value.
3. Press **ENTER** to confirm your chosen current setting.

Manual Setting of Voltage and Current by Up & Down Key

1. To change the voltage setting, just press the Up & Down Key, no other step is needed.
2. To change the current setting, press **ENTER** *twice*, the LCD will show **I-set**, push the Up & Down key for desired value.
3. Press **ENTER** to confirm your chosen current setting.

Manual Setting of Voltage and Current by Key Pad

1. Press **ENTER**.
Display will show **V-set** and the present voltage setting, key in the desired voltage level.
2. Press **ENTER** to confirm your chosen voltage setting, and the display will show **I-set**.
3. You can key in the desired current setting now, if you do not want to change the current setting, you still need to press **ENTER** again to confirm the new settings of voltage and current to complete the operation.
4. You must press the **ENTER** key 3 times in total even if you only want to change the voltage, otherwise the unit will flash **CANCEL** and returns to its old settings

Remarks

If during any of the above key pad operation, you fail to input a setting within 10 seconds, the unit will cancel the procedure and resume its previous settings.

You can exit any of the above operations by pressing the **CLEAR** key and the unit will resume to its previous settings.

7. Using the Preset Features

PRESET PROGRAM SYMBOLS

Program Unit is ready for inputting of Preset Program Number (1-9).

Recall Unit is ready for recalling a Preset Program Number.

The unit can store nine preset voltage and current settings.
Once programmed, these settings will be retained even when the unit is switched off.

Preset Programming

1. Press **PROG** key
The display will show **Program_**
Key in Program Number (1-9) at the keypad
2. The display will show :-
 - A) The newly key in Program Number and
 - B) The old settings of voltage and current with **V-set** ready for voltage to be reset.
 - C) Set the required voltage level then press by **ENTER** to confirm.
 - D) The display will show **I-set** ready for current level to be reset.
 - E) Set required current level then press **ENTER** to confirm.
 - F) The program will automatically advance to the next Preset (as shown in the display **Program_** section) ready for new setting of voltage and current.
 - G) If you want to change the voltage and current setting of next Preset repeat procedure B to E, otherwise just press **ENTER** to go to next Preset.

Whenever you want to terminate Preset Programming you can press **CLEAR** key to return to normal operation mode.

Selecting Presets

1. Press **RECALL** key
The display will show **Recall_**
2. Press the number key (1-9) .
The display will show the chosen Preset Number, its voltage and current level.
3. Press **ENTER** to activate .The unit will assume the chosen preset values.

If during any of the above procedures , you fail to input a setting within 10 seconds, the unit will cancel the procedure and resume its previous settings.

You can exit any of the above operations by pressing the **CLEAR** key and the unit will resume to its previous settings.

7.1 Operating the Timed Program

The unit can be programmed to operate up to 20 timed subprograms (1-19 **STEP** as shown in the display). Each subprogram is capable of running a preset operation period of 1 second to 99 minutes & 99 seconds with its own preset voltage and current level.

The timed subprograms can be set to run in sequence repeatedly from 1 to 9999 cycles.

You can run the unit through the sequence of subprograms for the input cycles number unless interrupted by pressing the **CLEAR** key.

Programming the Unit

1. Press **PROG** key
2. Press **0 KEY** (to get to the Timed Program Mode) and the display will show **Program 0 StEP--.00**
3. Input subprogram number 0 to 19 and press **ENTER** to confirm. and the display will show **StEP--.00** number and **V-set** ready for input.
4. Input voltage level followed by **ENTER** to confirm and display will show **I-set**.
5. Input current followed by **ENTER** to confirm. The bottom left corner of the display will show **Timer00m00** and the appearing minute symbol **m**
6. Input minutes period (0-99) followed by **ENTER** to confirm. The bottom left corner of the display will show **Timer00m00s** and the appearing second symbols
7. Input seconds period (0-99) followed by **ENTER** to confirm. The timed subprogram will automatically advance to next subprogram number ready for inputs of new settings.
8. Repeat procedure 4 to 7.
9. A subprogram is confirmed to retain the new setting only when procedure 7 is completed.
10. **You can input zero time period as a terminating subprogram.**

Remarks:

- A.) Once the subprograms are filled, the unit will return to manual operation mode.
- B.) Any subprogram with zero time period will become the Terminating Subprogram. For example if you set the subprogram 7 with zero time period, all the subprograms after 7 (i.e. 8,9,10-----19) become non-existent. And the timed program will only cycle from subprogram 0 (**STEP**) to subprogram 6. You can use this feature to cut off the subprograms that are not required for the sequence.
- C.) A subprogram is confirmed to the new settings only when procedure 7 is done.
- D.) During any of the above procedures, if you fail to input a setting within 10 seconds, the unit will exit from that procedure and return to manual operation mode.
- E.) For any wrong input, display will show **OUT OF RANGE** for about 3 seconds and then returns to its previous procedure/settings ready for correct new input.

7.2 Running the Timed Program Cycles

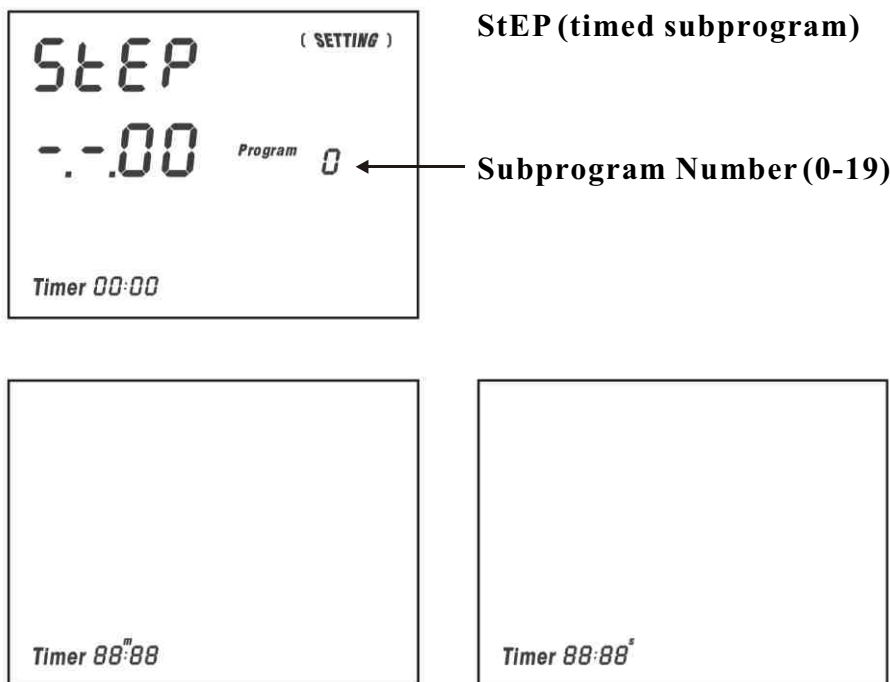
Once the desired number of subprograms have been filled as explained in the previous section, all the presets of voltage ,current levels and operation periods will be retained until further programming.

1. Press **RECALL** followed by the **0 KEY**.
The display will show **STEP 00** and **Recall 0** and the settings of the first Timed Subprogram.
2. Use the **UP^** or **DN/** keys to check the settings of all the timed subprograms.
3. Press **ENTER** and the display will show **CYC-0000**, the unit is ready for input of repetitive operation cycles.
4. Key in number of cycles required,1-9999 and followed by **ENTER** to start the cycle operation.
5. The unit will run through the Timed Subprogram 0 to 19 or 0 to any subprogram prior to the subprogram with zero time period .
6. The display will show the on-going cycle's count down time of the operation period, actual and set voltage and current ,number of cycles executed.
7. You can also see the power watt display if you press **ENTER**,
8. To return to the previous display press **ENTER** again

Note : Beware that the life span of the power supply is limited by the life of the relay which is of 100×10^3 operation as stated by the relay manufacturer.

TIMED PROGRAM SYMBOLS

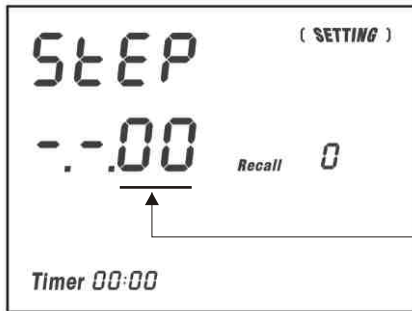
1. Inputting Subprograms



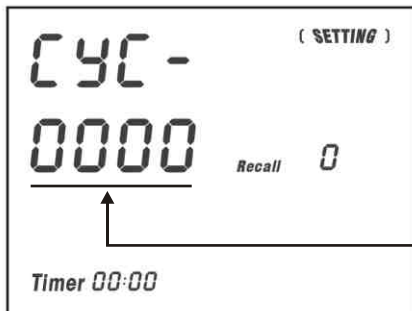
Setting minutes and seconds

2. Symbols in Running Timed Program Cycle

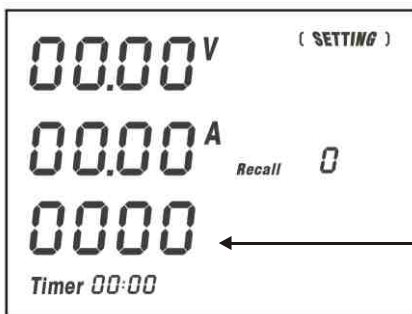
Unit ready for recheck of setting of all the timed subprograms



Subprogram Number (0-19)



Unit ready for inputting number of cycles



Number of cycles executed

8. MAINTENANCE

8.1 TROUBLE SHOOTING

1. Key pad and jog dial do not work
Check key lock symbol if in Lock state , unlock unit by SHIFT then LOCK/UNLOCK key, otherwise switch off unit and switch on again to see if problem persists.
2. No output power
Check output on/off symbol on display. Press SHIFT then O/PON/OFF
3. Cannot get high voltage setting within the rated maximum.
Check upper voltage limit setting by SHIFT then 0 Key.
Reset to rated max. voltage.
4. CANCEL symbol keeps appearing in all keying in operation.
Keying in time not fast enough as only 10 seconds are allowed for data inputting
And 3 seconds for operation mode setting.
5. OUT OF RANGE keeps appearing .
A. Check if setting is within the rated range.
B. If this occurs during voltage setting, see point 3.

9. PC Interface Control User Manual

9.1 Introduction

We integrate the micro-controller technology and our proprietary software with switching mode power technology to make this unit a user friendly, time saving and reliable power supply. In fact it is more than a power supply!

In PC interface mode:

1. With our proprietary software one PC can perform remote access/control and output data logging for one SDP power supply with RS-232 or up to 31 SDP power supplies using RS-485 interface.
2. Outputs for dynamic loading like power surges can be recorded, stored (also as XLS file) and displayed in the PC.
3. The PC can input, store, retrieve and transfer all the data entries for the Timed Programs and the Memory Presets to the SDP power supply. Thus eliminates the tedious process of keying in data for different groups of Timed Programs and Memory Presets to the SDP power supply.
4. Using the data logging function, the actual output voltages, amperes, watts and time period are recorded in the PC for later analysis. Adjusting the scales of voltage, current, power and time parameters can Highlight further graphical analysis.

9.2 System Requirement and Software Installation

1. CPU 450 MHz or above
2. Ram 128 MB
3. Min. monitor screen area 800 x 600 pixels.
4. Operating systems Window Xp, Me, 2000, 98SE, 98.

Installation of Software

1. Run Setup.EXE with the installation disk that comes with the unit.
2. Follow the instructions in the setup program. During the running of the setup program, you may encounter 'VERSION CONFLICT' remarks, ignore it and click 'YES' to complete the installation.
3. Finally a SDP icon is created in the Program Menu.

9.3 Operation Instruction for RS-232 Interface

1. Ensure your PC is off ,connect RS-232 to the serial com port of your PC and the power supply.
2. On your power supply, press the [SHIFT] key, then quickly press [RS232/485] key and select RS-232 followed by [ENTER] key.
3. Switch on your PC and run the SDP program.
4. Click on **Setup**, and select the disired Com. Port. The default is set at Com 1.



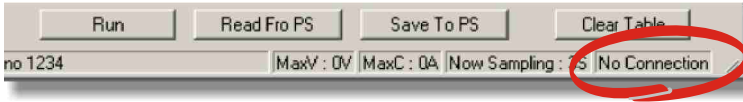
5. Click on **Supply Connect**, then click on **Single** in the drop menu.
6. An "Internal Timed Program" window will appear. Click on the Data Log header on top left and a Window as shown in Fig 1 will appear.



7. Remarks:

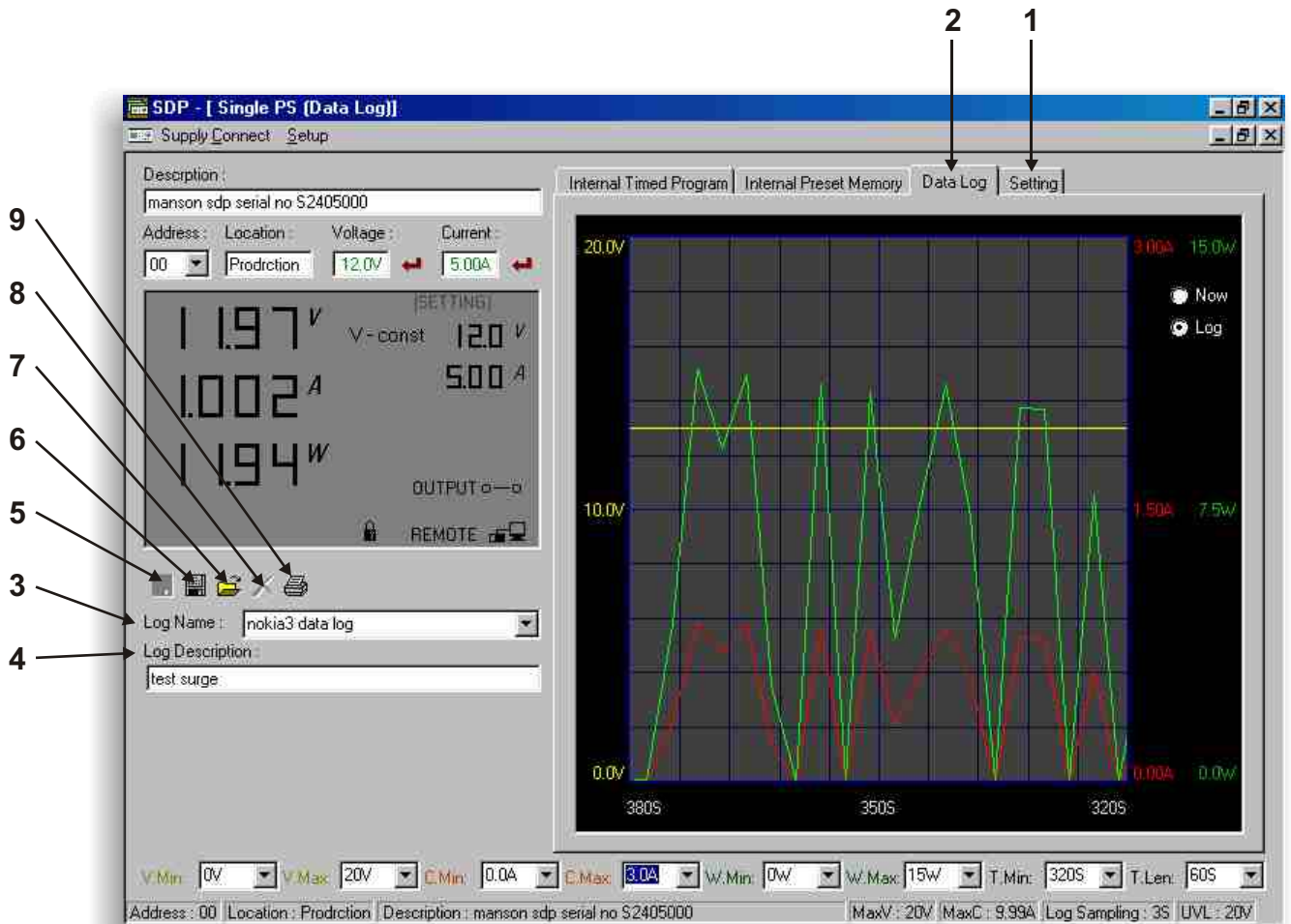


When the right bottom corner of the display window shows the **UVL** value, connection to the PC is made correctly and the power supply is operating normally .



If it shows **No Connection**, check the following:

- A.Go back to setup check if the correct comp port has been assigned.
- B.Check the Power Supply if RS-232 has been selected
- C.Check the RS-232 cable connections.
- D.Check power supply is on.



(FIG. 1)

1). Setting

one click , then the pop-up Data log Sampling Time

You can input your desired sample time from 1 second up or select from the drop menu.

Voltage Upper Limit Setting

You can set your output voltage upper limit value to further safeguard your low voltage applications.

2). Data Log window

- A). You can use the Data Log window to view present output data or stored data .
- B). All the parameters at the bottom of the window display can be changed by direct entry from the PC (with decimal point) and then confirm by the Enter key of the PC , or select the values from respective drop menu.

Parameters at the bottom of the Data Log window:

V Min.	-----	Minimum voltage level.
V Max.	-----	Maximum voltage level.
C Min.	-----	Minimum current level.
C Max.	-----	Maximum current level.
W Min.	-----	Minimum power level in watt.
W Max.	-----	Maximum power level in watt.

3). Log Name

Click cursor on "Untitled", type in a name for your log.
Note how the ###(5) icon changes to solid color

4). Log Description

You can type in your detail description of your log.

5). ##### Save Log

- This function (and the icon) becomes effective when a Log Name is entered to replace the "Untitled".
- Click on it will save the current data onto the PC.
- To retrieve the data , go to the drop menu at (3) Log Description.

6). ##### Export to a file of xls type

Click on this icon will export the collected data (in the Save Log) in xls format to your PC.

7). Open file log of xls type

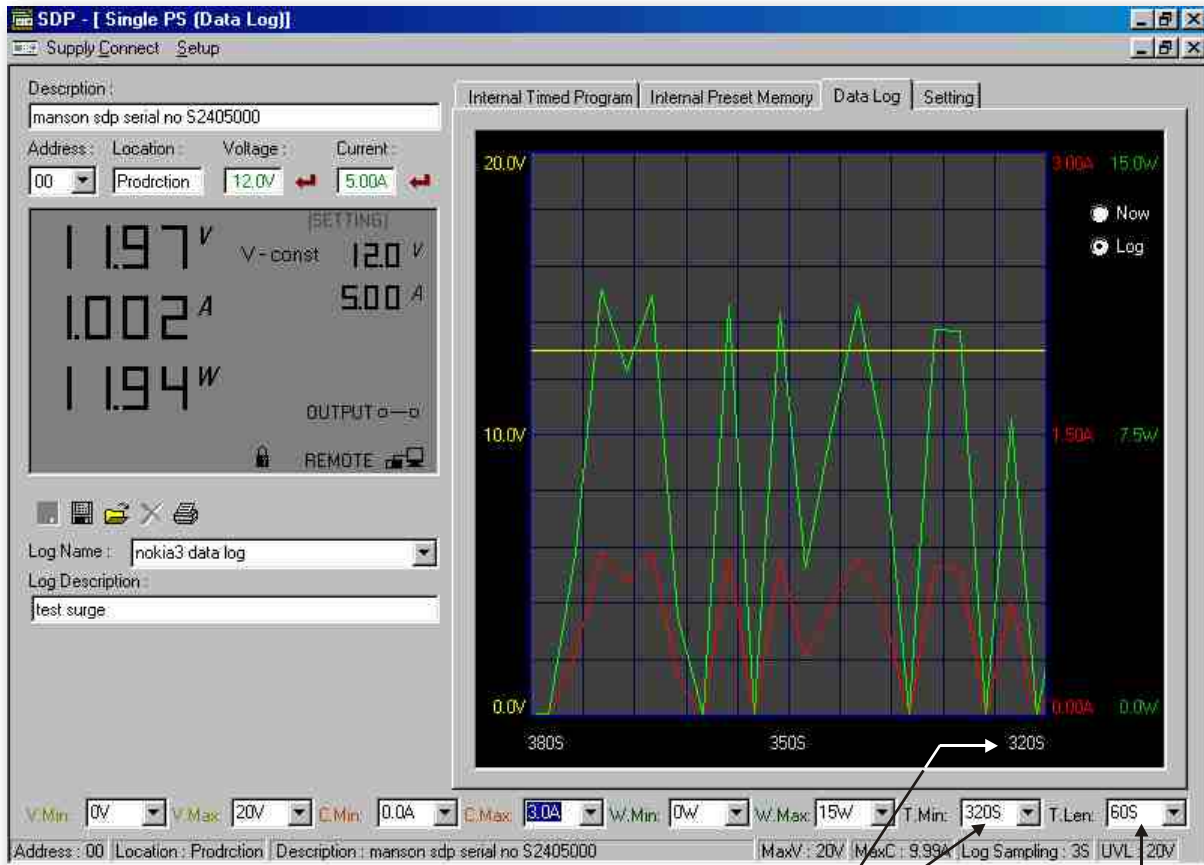
Click on this icon will import the collected data in xls format file to the SDP software.

8). XXX Delete

Click on this icon will delete the current log or retrieved log on display at (3).

9). Print Log in xls format.

THE DATA LOG WINDOW DISPLAY



(FIG. 2)

Time Minimum

Time Length

THE TIME FRAME CONCEPT OF DATA LOG

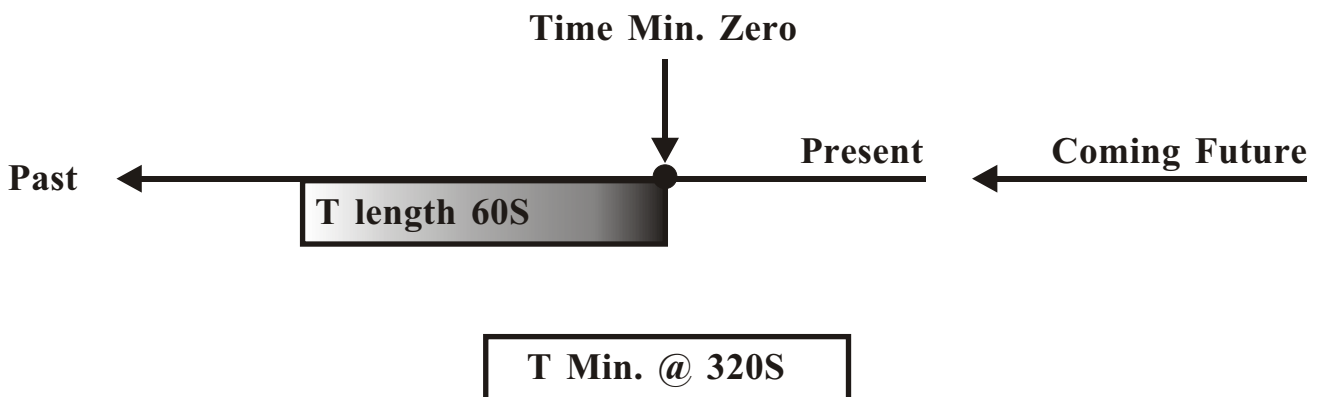
The data logging function starts when the software is started running.

When T Min is set to zero second, it means the unit is on real time and the length of time lapsed is on the left hand side of the Time Minimum.

T Len is the length of time lapsed starting from the Time Minimum.

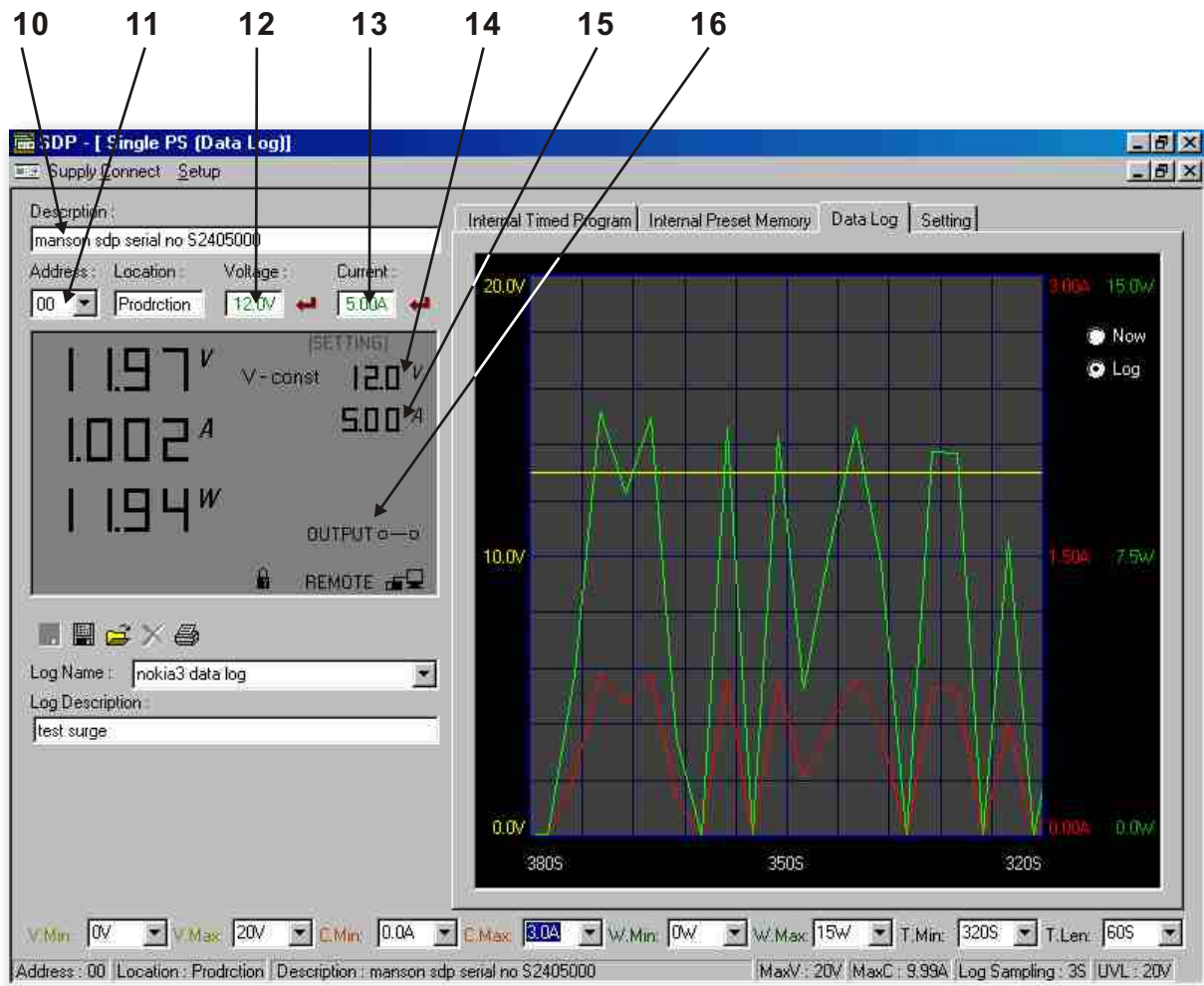
Both parameters are adjustable so that any time period of the log can be displayed for analysis.

In the above example, T Min is set to 320 second and T length to 60 second, the display shows the output data starting at 320 seconds ago and ending at the 380 second mark.



General Operation

Please refer to (Fig. 3) for the following description.



(FIG. 3)

10). Power Supply Description:

manson sdp serial no S2405000

You may click on and assign an identification for your power supply in use. Actually this feature is mainly for multiple power supplies application with RS-485.

11). Address :

00

This function is for multiple power supplies application. Each power supply has a unique address. Ignore this function when using RS-232.

12). Voltage:

##.# V

Enter the desired output voltage with decimal point.

13). Current:

A

Enter the desired current limit with decimal point.

(14) and (15)

Alternative way to adjust output voltage and current ;

Left click increases by 0.1 unit

Right click decreases by 0.1 unit.

16). OUTPUT o-----o

Left click on icon will switch on or off the output.

Internal Timed Program

The PC interface remote mode really eliminates the tedious process in keying in groups of entries on the power supply . Because all the data are displayed together in the monitor , possibility of wrong entry is greatly reduced. Data of different groups can be classified, stored ,exported and retrieved for use at any time.

Furthermore, retrieved data will be in red color if they exceed the present preset limits of voltage in upper voltage level or current limiting value.

The operation principle of Saving, Exporting, Filing, Deleting and Printing are the same as the Data Log function.

Clear Table Delete all data on the Display Table to ready for new data entry.

Save to PS Transfer data from the Display Table to the Power Supply.

Read fro PS Get data from the Power Supply.

Run To run the timed program.

Running Cycle

Enter the number of desired running cycles here, **Maximum cycles is 9999.**

Operation

- 1.) Clear old data in the power supply by first click [Clear Table] then click [Save To PS].
- 2.) Check if no data in power supply by click [Read Fro PS].
- 3.) Enter data in the table using the Up Down Left Right keys of your PC key board for new locations.
- 4.) Data exceed the rated voltage and current will not be accepted.
- 5.) Voltage exceed set UVL (Upper output Voltage Limit) will not be accepted.
- 6.) If retrieved or entered data exceed present Upper or Lower limit setting of voltage /current/time, the data will becomes red in colour.
- 7.) Transfer set data to power supply by clicking [Save to PS].
- 8.) *Click [Read Fro PS] to initiate the [Run] command.*
- 9.) Set number of desired [Running Cycle] and Click [Run].

Internal Preset Memory

The operation principle is the same as Internal Timed Program.

To activate the selected preset click on the box of the [Select] column then click Run.

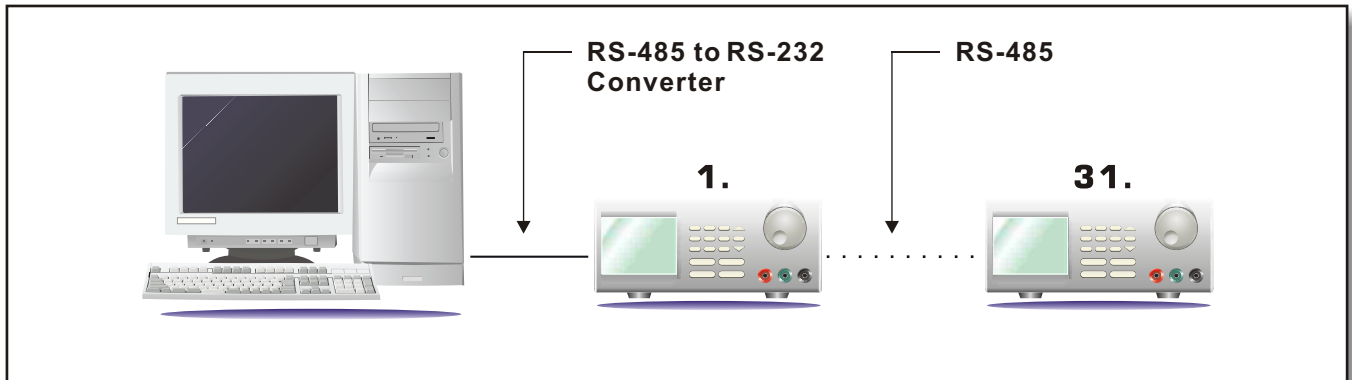
If retrieved or entered data exceed present Upper or Lower limit setting of voltage /current/time, the data will becomes red in colour.

9.4 Operation Instruction for RS-485 Interface

This interface operation is provided for remote access/control up to 31 SDP Power Supplies.
The setup procedures are as below:

9.4.1 Configuration of each power supply

1. Ensure your PC is off, Use RS-485 Plug to connect the Power Supplies to each other.
2. Make sure the PC are interconnected, use RS-485 to RS-232 converter to connect one of the power supplies and the serial com port of your PC(Fig.4).



(FIG. 4)

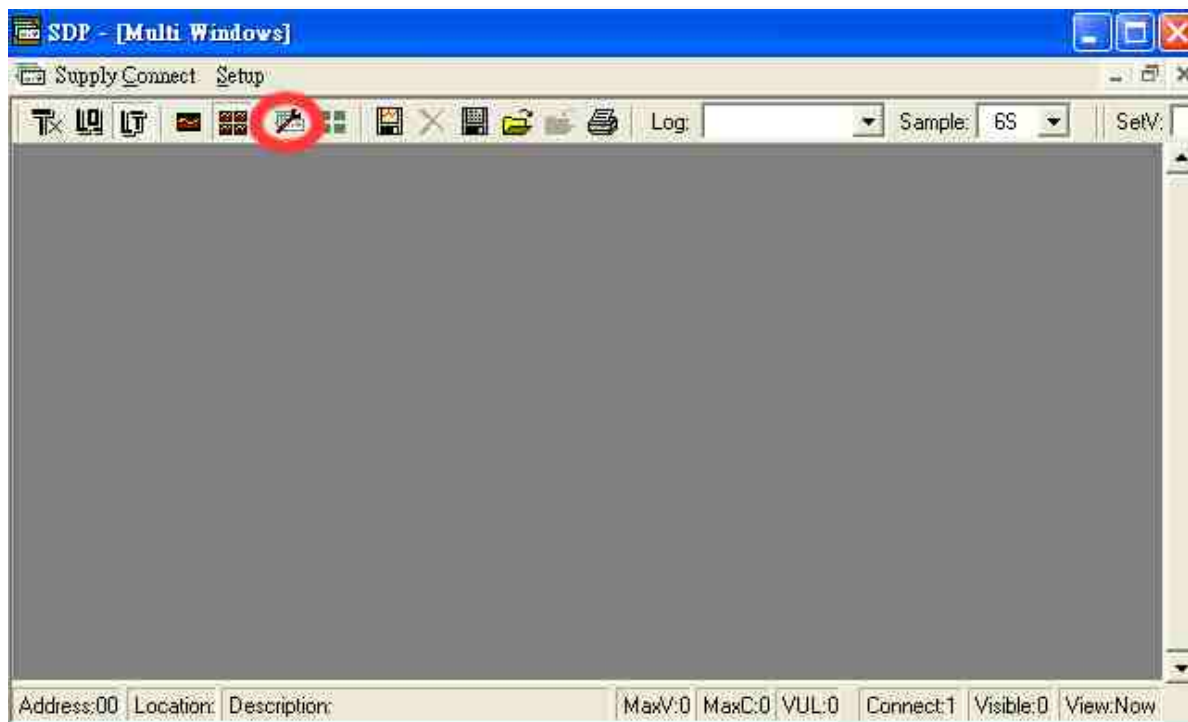
3. On your power supplies, press [SHIFT] key, then quickly press [RS-232/485] key and select RS-485.
4. A 3-digit number will appear. This number is the address assigned to the power supply and will be used in the software.
5. Using the Key Pad to key in the address to assign for each power supply. The range is 001 ~ 031 and each of the power supplies requires an unique address.
6. Switch on your PC and run the SDP program.
7. Click on Setup, and select the desired Com. Port. The default is set at Com 1.
8. In the tool bar, Click on Supply Connect, then click on Single in the drop menu.
9. An Internal Timed Program window will appear.
10. By choosing the address in the Address field (Fig.5) you can input the desired settings for each power supply as given in Section 9.3 on page 12.



(FIG. 5)

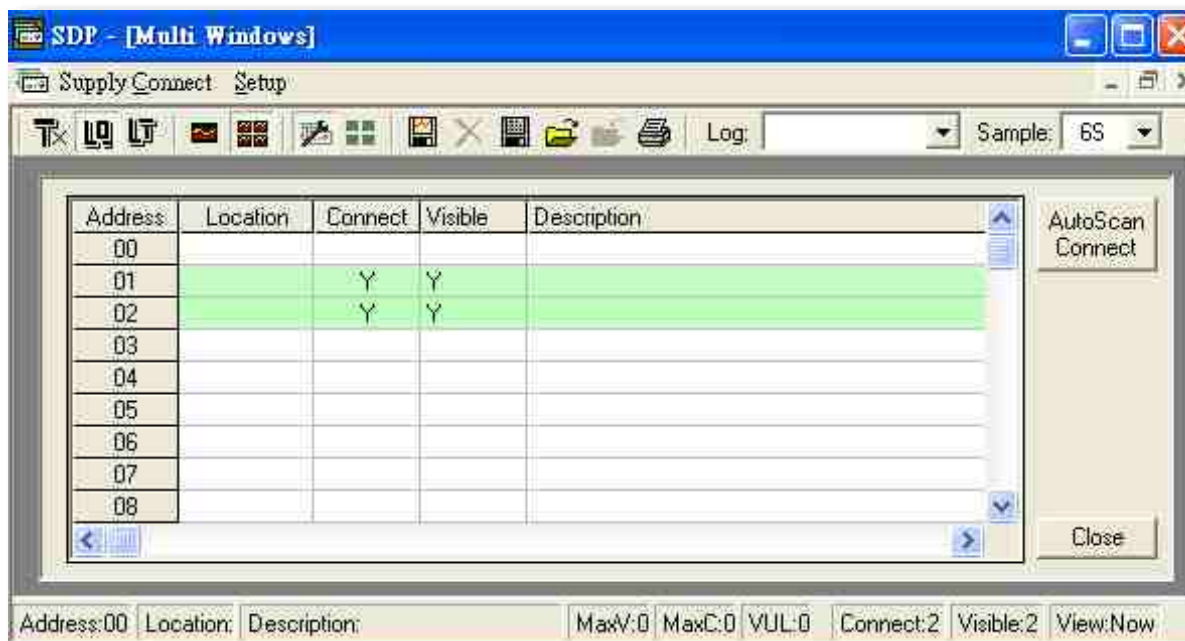
9.4.2 Configuration of Multi Windows Analysis

1. In the tool bar, Click on Supply Connect, then click on Multi in the drop menu.
2. A Multi Windows window(Fig.6) will appear.
3. Click on the icon (circled as below), a Multi Power Supply Connect Setup(Fig.7) will appear.



(FIG. 6)

4. Click on AutoScan Connect, the window will show the connected power supply indicted as "Y".

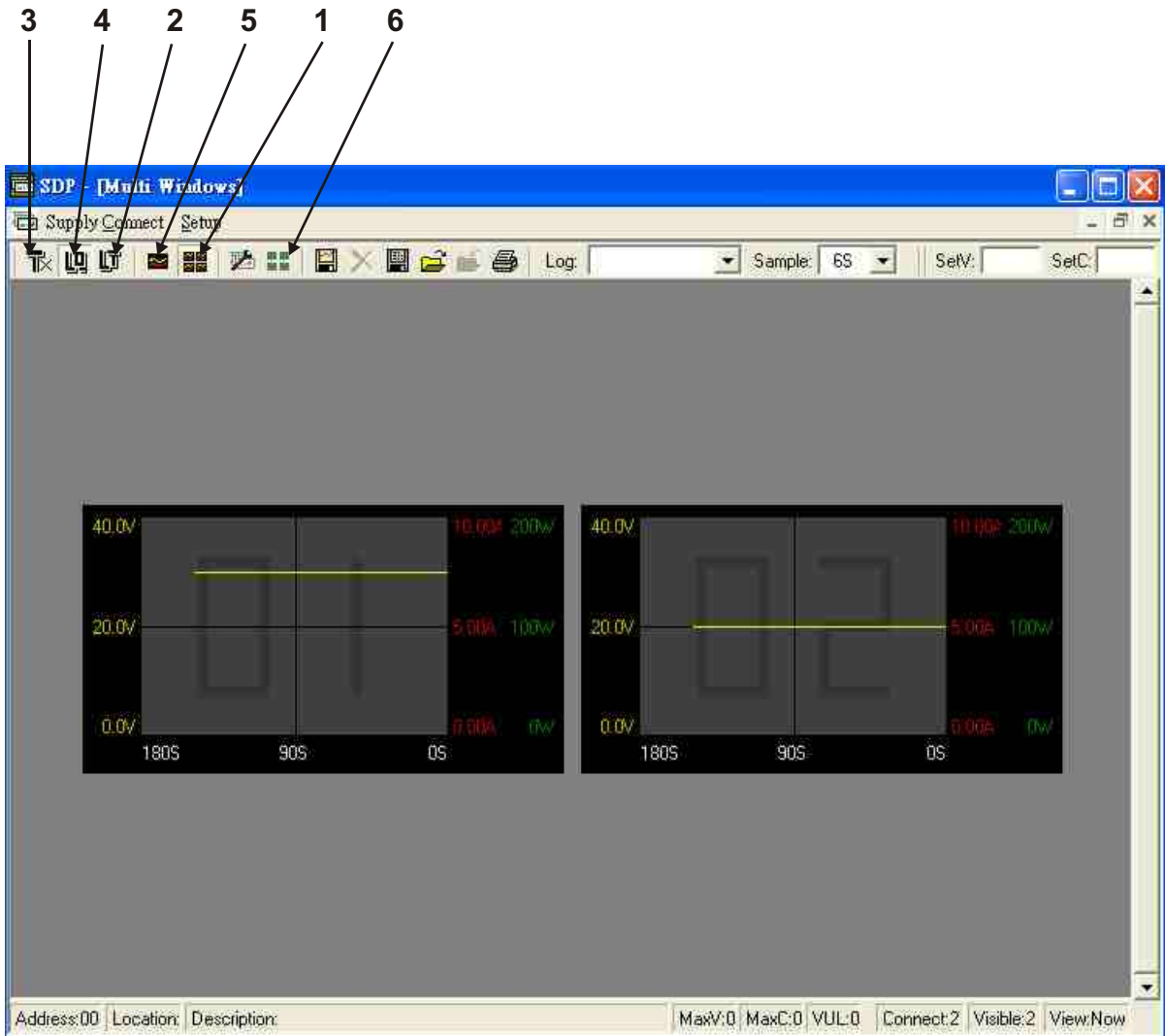


(FIG. 7)

5. Click on the box along the Visible Column to set the desired power supply to be visible in Multiple Data Log Window.
6. You can type in the description and location of your power supplies in the Location and Description Column.

7. Click on Close icon(at right bottom of window) to return to Multiple Data Log Window.

8. **Remarks:**



(FIG. 8)

1). **Multi Alleyway Display**

one click, it will display the Data log and output data of all the power supplies. It will activate the icon (2), (3) and (4).

2). **Show Digital and Log**

one click, it will show both the data log of all the connected power supplies.



(FIG. 9)

You can click on the data log to select the power supply, the data log will highlight in blue and the address bar in the left bottom window will show the selected power supply.

3). Show Digital

one click, it will show the digital readings of all the connected power supplies.

4). Show Log

one click, it will show the data log of all the connected power supplies.

5). Single Alleyway Display

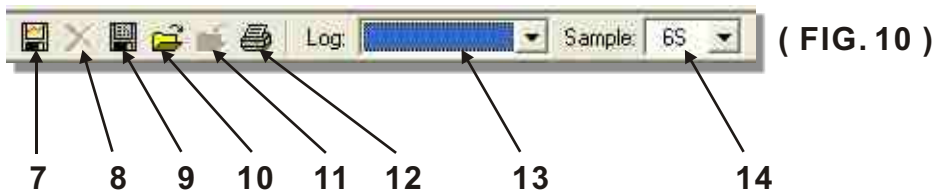
one click, it will only display the Data log of the selected the power supply(Fig. 10). It will disable the icon (2), (3) and (4).

The parameters at the bottom are same as the Data Log Window in RS-232 Interface(Page 14).

The All SP Tick box --- Tick to apply the parameters to all Data Log Window in Multi Alleyway Display.

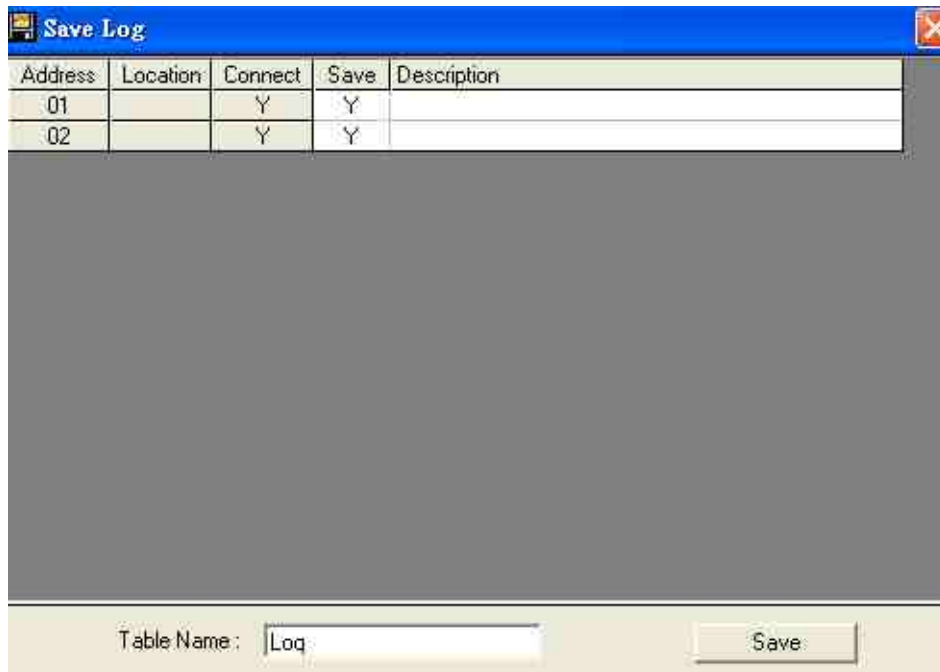
6). Log Thumbnails Size Setup

one click, it let user to adjust the window size of the Data log Window in Multi Alleyway Display. Use the sliders to adjust the height and width of the Data Log Windows. Scale 4:3 tick box can enable 4:3 screen size for the Data Log Windows.



7) Save Log

a) Click on it and a save log window(Fig.13) will appear.



- b) Click on the box along the Save column to choose the desired power supplies' data log to save.
- c) Type in the Table Name.
- d) Click Save will save the current data onto the PC.
- e) To retrieve data, go to the drop menu at Log (13).
- f) To delete the log data, click on Delete Log icon (8).

8). Delete Log

It can delete the log data in the PC.

9). Export to a file log of xls type

Click on this icon will export the collected data (in Data Log) in xls format to your PC.

10).Open File Log of xls type

Click on this icon will import the collected data in xls format file to the SDP software.

11).Close File Log of xls type

Click on this icon will close the import xls format file.

12).Print Log

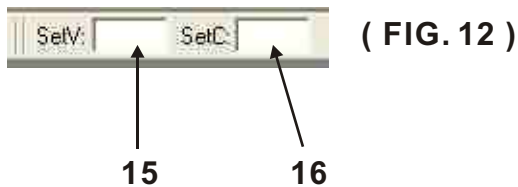
Print Log in xls format.

13).Log

Click on it to select the save log data.

14).Sample

Click on it to select the sampling time.



15).SetV

Click on it and type in to change the voltage setting of the selected power supply.

16).SetC

Click on it and type in to change the current setting of the selected power supply.

SAMPLING TIME & AVAILABLE LOG TIME RECORD

The available log time record for each log is $1800 \times$ sampling time.

**Hence a sampling time of 3 seconds will allow log time record of up to $1800 \times 3 = 5400$ seconds
a sampling time of 6 seconds will allow log time record of up to $1800 \times 6 = 10800$ seconds**

When logging record is in excess of allowable log time record , the new log will overwrite the first log record.