

ARC3500 for UBC3500XLT

User Manual

Version 1.000

<C> 2006 BuTel software The Netherlands – all rights reserved

www.butelsoftware.com

Contents:

- 1 Introduction and quick start reference
 - 1.1 Software Installation
 - 1.2 Enter registration information
 - 1.3 Connecting the scanner to your PC
 - 1.4 RS232 port setup
 - 1.5 USB information
 - 1.6 Explanation of System and Group Quickkeys
- 2 Using and understanding the ARC3500 editor:
 - 2.1 Reading data from the scanner
 - 2.2 General hints and tips for using the editor
 - 2.3 How to build a new system
 - 2.3.1 System parameters
 - 2.3.4 Pasting Trunk frequencies from a website
 - 2.3.5 Setting up groups in a system
 - 2.3.6 Adding and Deleting Groups
 - 2.3.7 QuickSave
 - 2.4 Default Data
 - 2.5 Sort data
 - 2.6 Easy Fill
 - 2.7 Using the dipboard
 - 2.8 Copy/Move/Swap banks/channels
 - 2.8.1 Copy/Move/Swap memory channels within a system
 - 2.8.2 Copy/Move/Swap memory banks within a system
 - 2.8.3 Copy/paste groups between systems
 - 2.8.4 Copy/paste systems
 - 2.9 Fill Down / Fill Series
 - 2.10 Other editor options
 - 2.11 Understanding how data is stored in ARC3500
 - 2.11.1 Viewing a Profile / create a profile
 - 2.12 Organizing QuickKeys
 - 2.12.1 QuickKey Easypick
 - 2.12.2 Quickkey Overview
 - 2.12.3 Groups per Quickkey
 - 2.12.4 Group Quickkeys preset
 - 2.12.5 System quickkeys preset
 - 2.13 Uploading data in the scanner
 - 2.14 Import/Export data
 - 2.15 Software Bandplan
 - 2.16 Instant Firmware Updates
 - 2.17 Open/Import UASD files
 - 2.18 Linking Maps to a System
- 3 WebCatcher and TrunkWebcatcher
 - 3.1 Using WebCatcher
- 4 Scanner Configuration parameters
- 5 Virtual control
 - 5.1 Keyboard shortcuts
 - 5.2 Mini Display History
 - 5.3 VC minimized / Mini Window / Reposition Mini Window
- 6 N/A for UBC3500
- 7 N/A for UBC3500
- 8 Misc. items
 - 8.1 Troubleshooting RS232 communication problems
 - 8.1.1 Set/Check communication settings
 - 8.1.2 Check your cable
 - 8.1.3 Other serial devices
 - 8.1.4 Serial/USB drivers
 - 8.1.5 Use ARC3500 autodetect
 - 8.1.6 Comm error 8018
 - 8.2 revision history
 - 8.3 connecting scanner audio

1: INTRODUCTION:

ARC3500 is a Windows software package for easy programming and controlling the Uniden UBC3500XLT.

System requirements:

- Windows XP/Win2000
- Minimum display resolution settings: VGA 800x600
- Display must be set to SMALL Fonts
- Free serial port com1-com16 or USB to serial converter

ARC3500 Quick Start Reference:

- Install the software (1.1)
- Enter the registration information (1.2)
- Connect the scanner to the PC (1.3)
- Setup the RS232 serial communication port number and baudrate using auto detect (1.4)

IMPORTANT INFORMATION:

IMPORTANT: YOU MUST ENTER A VALID REGISTRATION CODE TO MAKE FULL USE OF THE SOFTWARE. THE REGISTRATION CODE IS SEND TO YOU BY E-MAIL (IF YOU PURCHASED ONLINE) OR IS IN THE CD BOX. DO NOT LOSE THIS INFORMATION; YOU NEED IT FOR UPDATES!

Software limitations/ Important Information:

Screenshots in this manual were taken from ARC-246/ARC-330/ARC-396

ARC3500 can open 200 systems at the same time.

Per system you can open 20 groups.

Per group you can program 200 channels.

If you want to program more than 200 frequencies in a conventional system, use extra groups to store the frequencies.

'Empty' channels are not sent to your scanner, so they do not waste space in scanners memory!

The UBC3500XLT is a conventional scanner, it does NOT receive trunk systems. Some screenshots in this manual may show information related to trunk systems.

1.1 Software installation:

The ARC3500 is available as Internet download or on CD-ROM.

You must be logged on as administrator to install and use ARC3500.

Internet download:

The downloaded file contains all the necessary files for installation. Run the exe file and the installer will automatically start.

CD ROM:

Insert the CDROM; the CDROM has an auto start option that will automatically start the installation process. If the installation process does not start, simply run setup.exe

During the installation process you can set the installation directory. We suggest using the default directory. You cannot install the software on a network drive.

Software un installation:

ARC3500 will automatically add an uninstall option. Use the Windows Control panel for uninstalling the software. Backup your work before using the uninstall option.

1.2 Registration:

After installation of the software, the program runs in DEMO mode. You must enter a valid registration code to activate the software. Without valid registration the software will not upload data to the scanner.

DEMO mode restrictions:

- In demo mode you can upload limited number of systems for a limited period
- When demo expires no systems can be send to the scanner

Internet download: customers that purchased using the Internet download option; receive a registration code by e-mail.

It is VERY IMPORTANT that you store the registration code in a safe place. If you lose the registration information you must buy a new registration code.

CDROM: in the jewel case of the CDROM you find the registration information. Store the case of the CDROM in a safe place.

Enter registration:

Start the software by selecting START _ PROGRAMS _ BuTel _ ARC3500 _ ARC3500 for Uniden UBC3500XLT. After the start screen, select HELP _ REGISTER in the menu.

Enter the name and key information: the name is case sensitive!
No spaces are allowed. The key only contains numbers. The name may contain '0' (=zero) or capital O.

1.3 Connect your scanner:

The scanner must be connected to a free serial port. This is normally a 9-pin connector at the back of your PC. Refer to your PC and scanner manual for information.

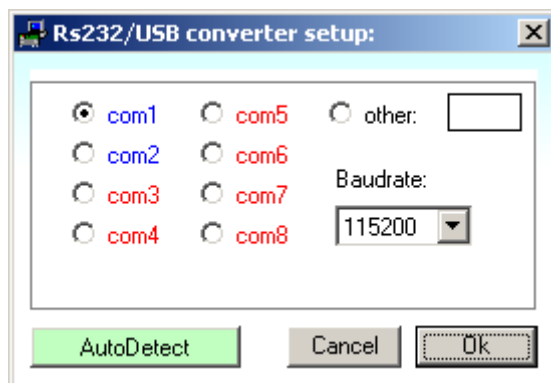
If your PC does not have a serial port you can purchase the USB1 optional cable (www.butelsoftware.com)

UBC3500XLT: the UBC3500XLT serial cable can be purchased at www.butelsoftware.com

1.4: Getting started: RS232 communication setup

After installation of the software you must check and set the software settings for RS232 communication.

Start the software and select: UBC3500XLT _ RS232 setup from the menu.



The software has an auto detect option.

If you know the settings for the serial communications port and baud-rate you can manually set them. Select OK and the software will store your settings. The software remembers these settings.

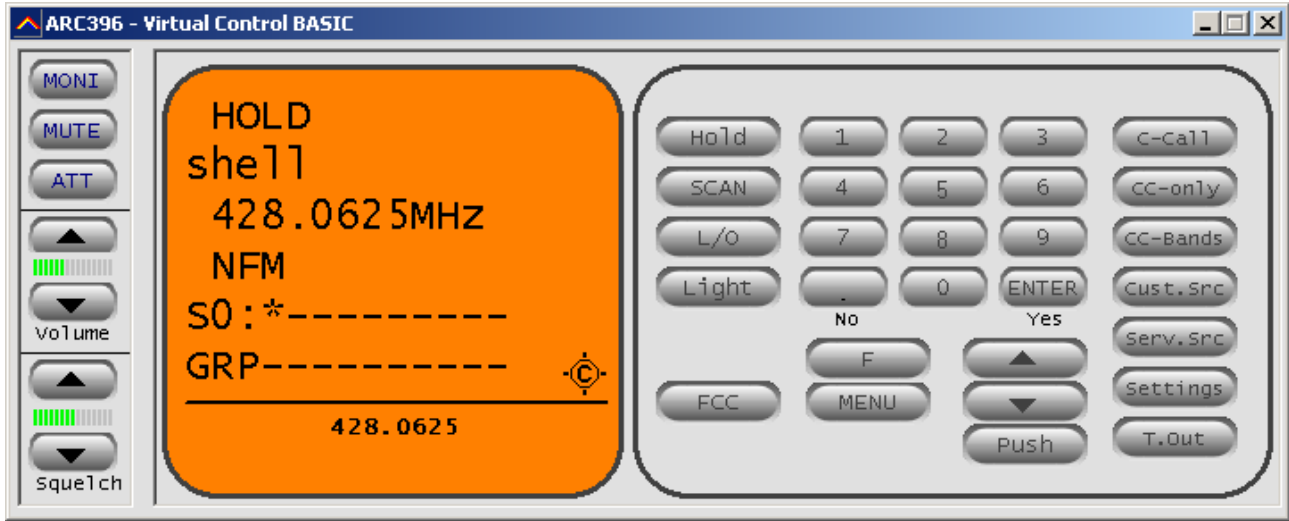
The software automatically shows you the available comports. 'Blue' comports are available, 'red' comports are either not available/installed or used by other software applications.

If you do not know the correct settings you can use the software auto-detect option:

- Connect your scanner to a free serial comport (normally this is a 9 pin connector) using the cable that was supplied with the scanner
- Switch on your scanner, verify the scanner is enabled for RS232 serial communication: Press MENU, select 'Xfer Information' 'PC Control' and select 115200 and press E to store this setting.
- In the software press the auto-detect button, the software will scan all available serial ports and detect the scanner model and baud-rate. This autodetect process may take several minutes.
- If the software successfully detects the scanner, a message is shown, if the software does not detect the scanner check your cable and the scanner settings. Refer to section 8.2 for troubleshooting tips from our customer support department.
- The 115200 baud-rate setting is the preferred setting. Only use lower baud-rates in case of erratic communications. Choosing a lower baud-rate than 19200 will decrease overall performance of the software.

After setting up the serial communication you can check the connection. From the main menu select: UBC3500XLT _ Virtual Control. After a few seconds the Virtual control panel should show the contents of the scanner display.

Below is an example (your 'display' will look different):



1.5: USB information

If your PC does not have a serial port you can purchase the optional Uniden USB1 cable at www.butelsoftware.com

1.6 Explanation of System and Group Quickkeys

Your scanner can store a maximum of 200. Each system can hold a maximum of 20 groups.

By using system quickkeys you can 'combine' systems and toggle them on/off using a system QuickKey.

In this example system 1 and system 2 are assigned to system qkey 4. So enabling system quickkey 4 will enable or scan these 2 systems.

System 1 - System Quickkey 4

- |
- | Group 1 - group quickkey 1
- | Group 2 - group quickkey 1
- | Group 3 - group quickkey 1

System 2 - System Quickkey 4

- |
- | Group 1 - group quickkey 1
- | Group 2 - group quickkey 2
- | Group 3 - group quickkey 3
- | Group 4 - group quickkey 4

System 3 - System Quickkey 7

- |
- | Group 1
- | Group 2
- | Group 3

System 4 - System Quickkey 7

- |
- | Group 1
- | Group 2
- | Group 3
- | Group 4
- | Group 5

Group quickkeys only work within a system and can only be set when that system is active. So in example above, selecting **group quickkey 1** in System 1 will enable group 1, group 2 and group 3 of system 1. The groups in System 3 and 4 are not assigned to a group quickkey and will always be scanned (if related system quickkey 7 is enabled.)

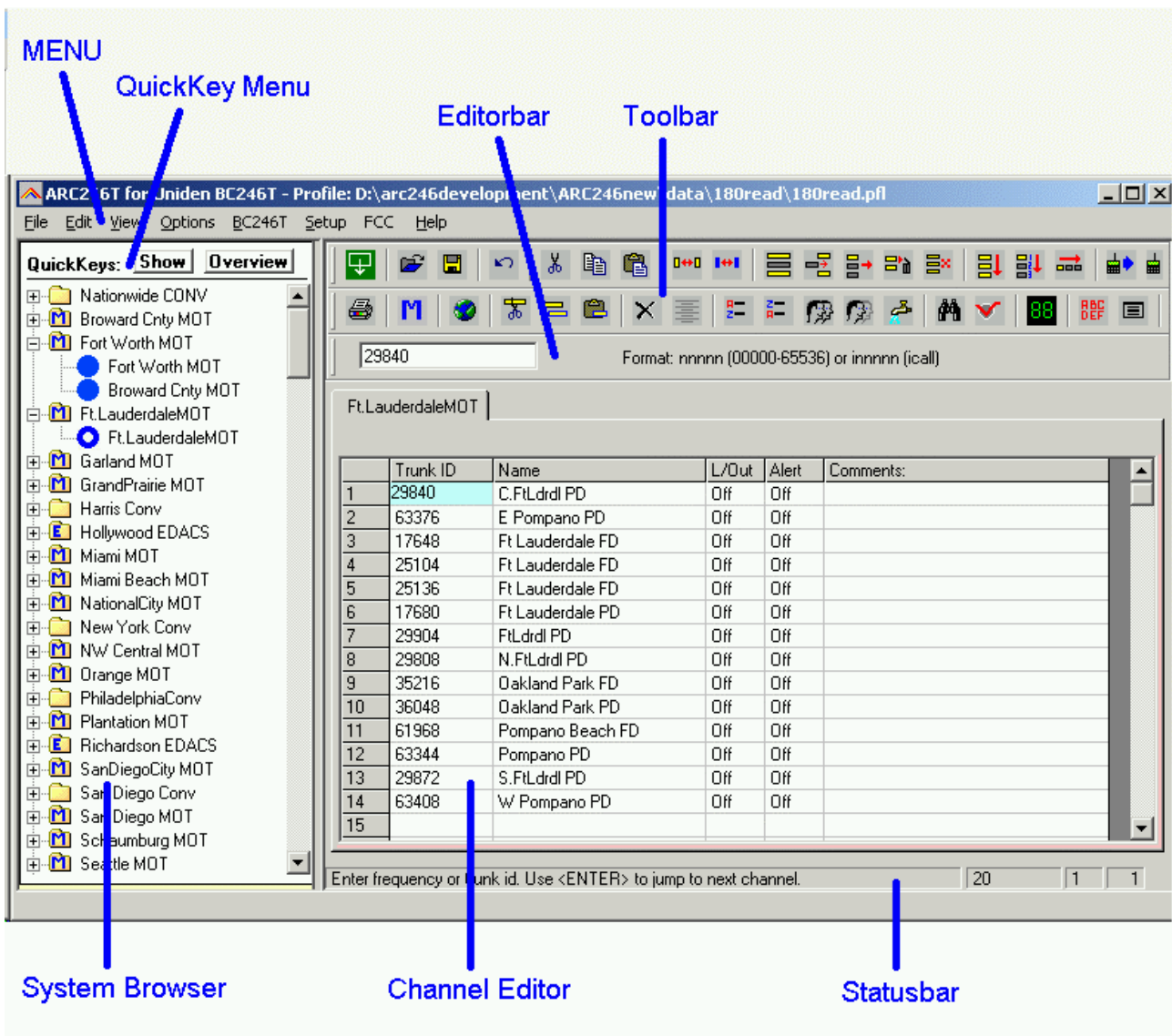
2: Using and understanding the memory channel editor:

ARC3500 includes the most versatile memory editor available on the market. Unlike other software packages you can use ARC3500 without a scanner connected.

The main editor screen layout is divided into two panes, the left pane is called the 'system browser', and the right pane is called the 'channel editor'. For your convenience Windows style toolbars and right mouse click menus are available.

This section describes most options available in the memory editor; in order to use the full power of the editor it is important that you read this section carefully. The editor does not require that a scanner be connected.

The memory editor has a clear layout:



The top section has a standard Windows MENU bar and a Toolbar. Most options found in the menu also have a 'shortcut' in the toolbar. If the mouse is moved over a toolbar button a help text is shown giving a brief description of that button.

The editor bar changes as you move the mouse in the editor grid, if you click on a column the editor bar will show the right edit options. You can edit data both in the editor bar or directly in the editor grid.

Tip: In the Frequency and Name column you can enter edit mode by pressing F2 or double clicking a cell.

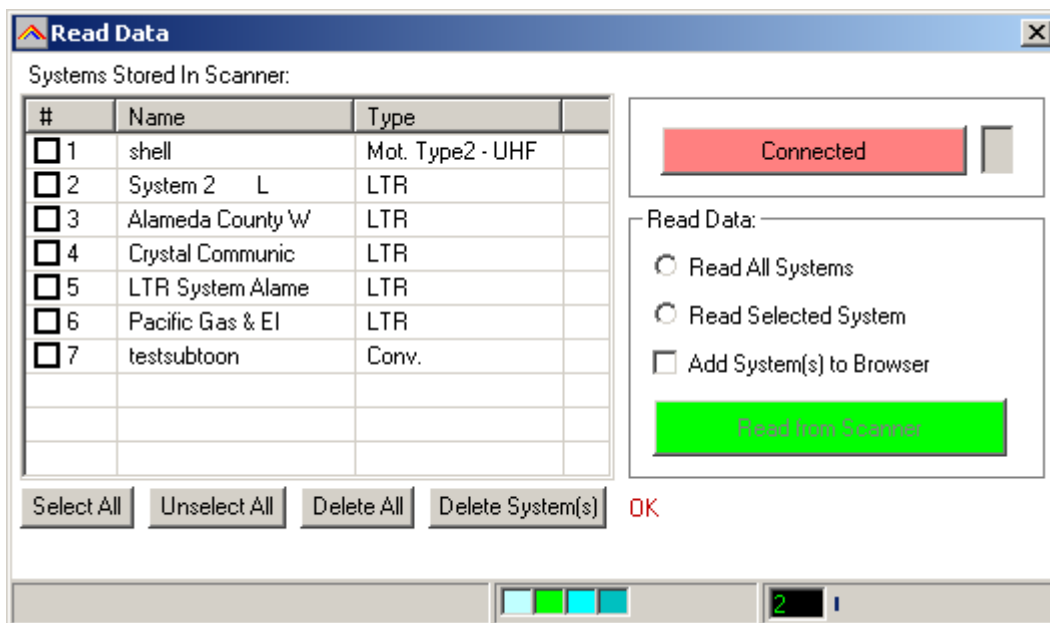
2.1 Reading data from the scanner:

After setting up the communication you can start to use the memory editor. Because there is probably already some data in your scanner it is a good start to first read the data from your scanner.

From the main menu select: UBC3500XLT _ Read Data.

Tip: you can also use the toolbar button or press F5.

A new window is shown:



The software always starts with reading system information from the scanner. This information is required to read data from the scanner.

If the software fails to read data, correct the problem and press 'Connect To UBC3500XLT'.

You can read all systems or selected systems. Make your selection in the list box by clicking the selection boxes.

For your convenience, Select All and Unselect All buttons are available.

In this window you can also delete systems from your scanner.

Add System's option: when this box is checked, the ARC3500 systembrowser will not be cleared and all systems you read from the scanner are added into the browser. If this box is not selected the systembrowser will be automatically cleared.

Important: ARC3500 can handle systems with the same 'systemname'. But to avoid problems, it is best to only use unique system names.

Memory indicator: In the status bar the current used UBC3500XLT memory is shown (0-100% scale)

2.2: Hints and Tips

Once data is transferred to the memory channel grid you can use many options to edit your data. ARC3500 is the most versatile editor available on the market.

Using the menu or toolbar you can easily move/copy/sort data. All options also have a toolbar button available. Moving the mouse pointer over a toolbar button will show a small popup help text.

You can edit data directly in the grid or you can use the editor bar. The editor bar will automatically change if you click on a column.

Tip: In the Frequency and Name column you can enter edit mode by pressing F2 or double clicking a cell. This will show an edit box with cursor and the background color of the cell will change.

In the frequency and tag columns you can directly type data, to edit existing data use the editor bar above the grid or press F2.

Most columns support double click for easy data toggle. The space bar has the same effect as using the mouse double click.

Sorting data: you can easily sort data in the Frequency or name column by double clicking the header of those columns!

Keyboard shortcuts:

In some columns you can also use keyboard shortcuts:

Mode: A=Auto, F=FM, N=NFM

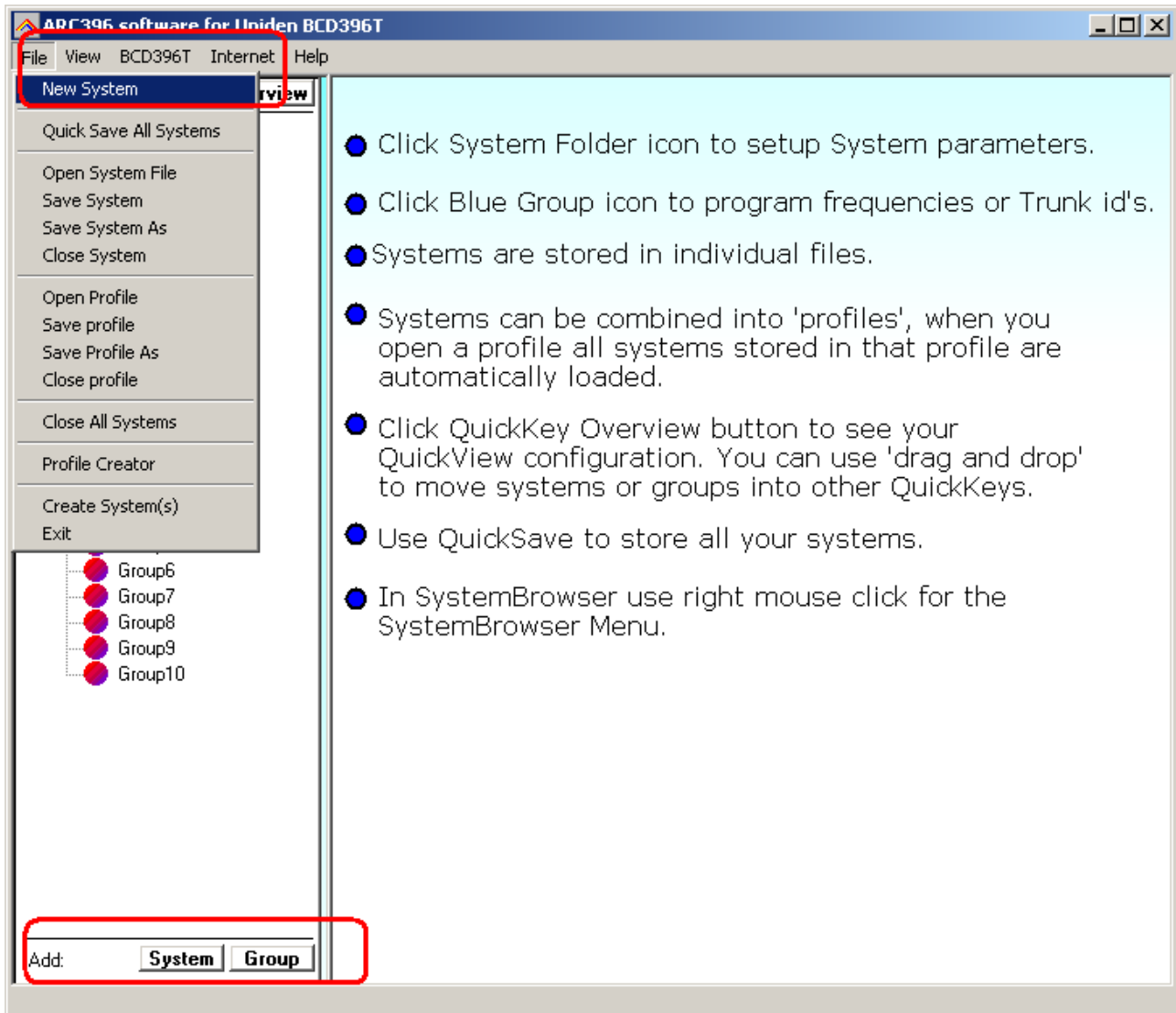
On/Off columns: 0 = OFF, 1=ON, F=OFF, N=ON.

Spacebar: toggle data

Although the editor can display 'Empty' channels, they are not sent to your scanner.

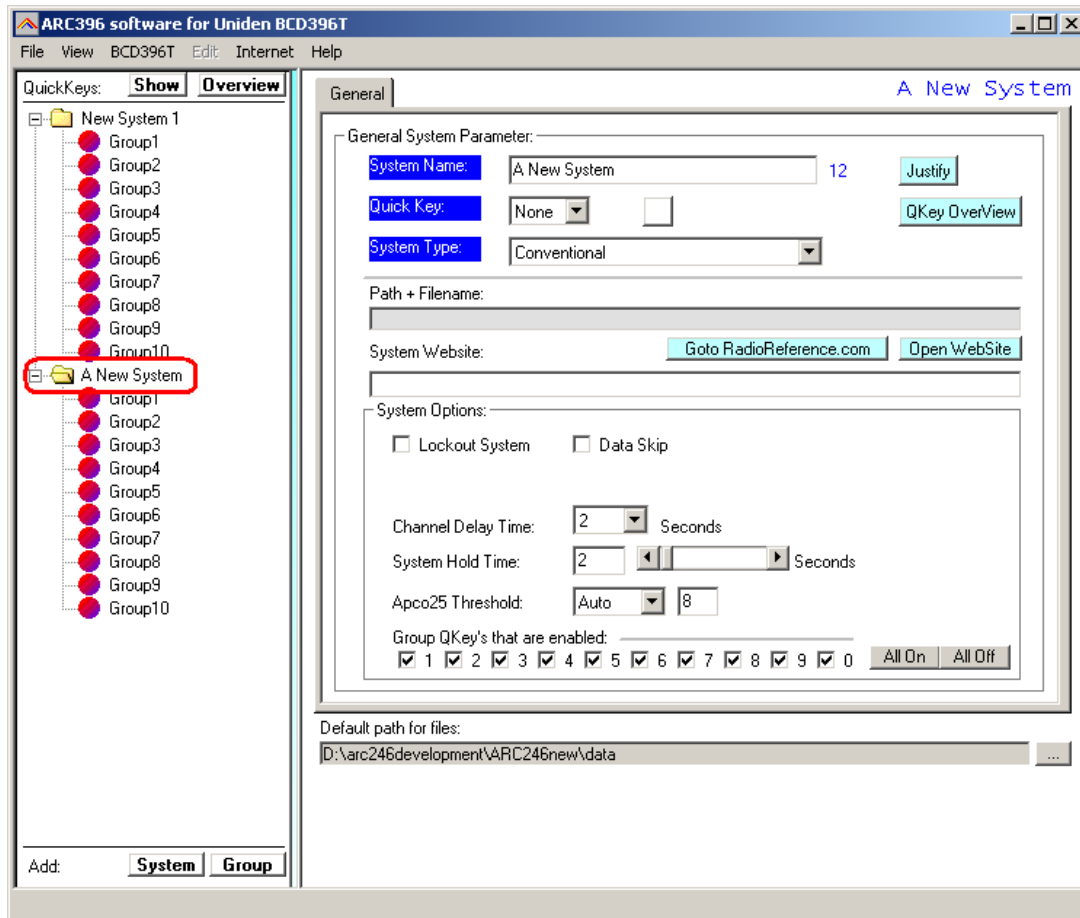
2.3 Build a new system:

To build a new system select 'FILE _ NEW', this will add a new system to the systembrowser, or press the System button in the Add menu.



2.3.1 System Parameters

Click the 'New System' line in the system browser to open the system parameter editor:



First enter a unique name in the 'System Name' box.

Website: enter a website with information about this system. Pressing 'Check Site' will open the website. This website link is stored in your system file.

System options: set the system options; refer to UBC3500XLT user manual for information.

2.3.2 Trunk system Parameters

N/A for Uniden UBC3500XLT

2.3.3 Trunk frequencies

N/A for Uniden UBC3500XLT

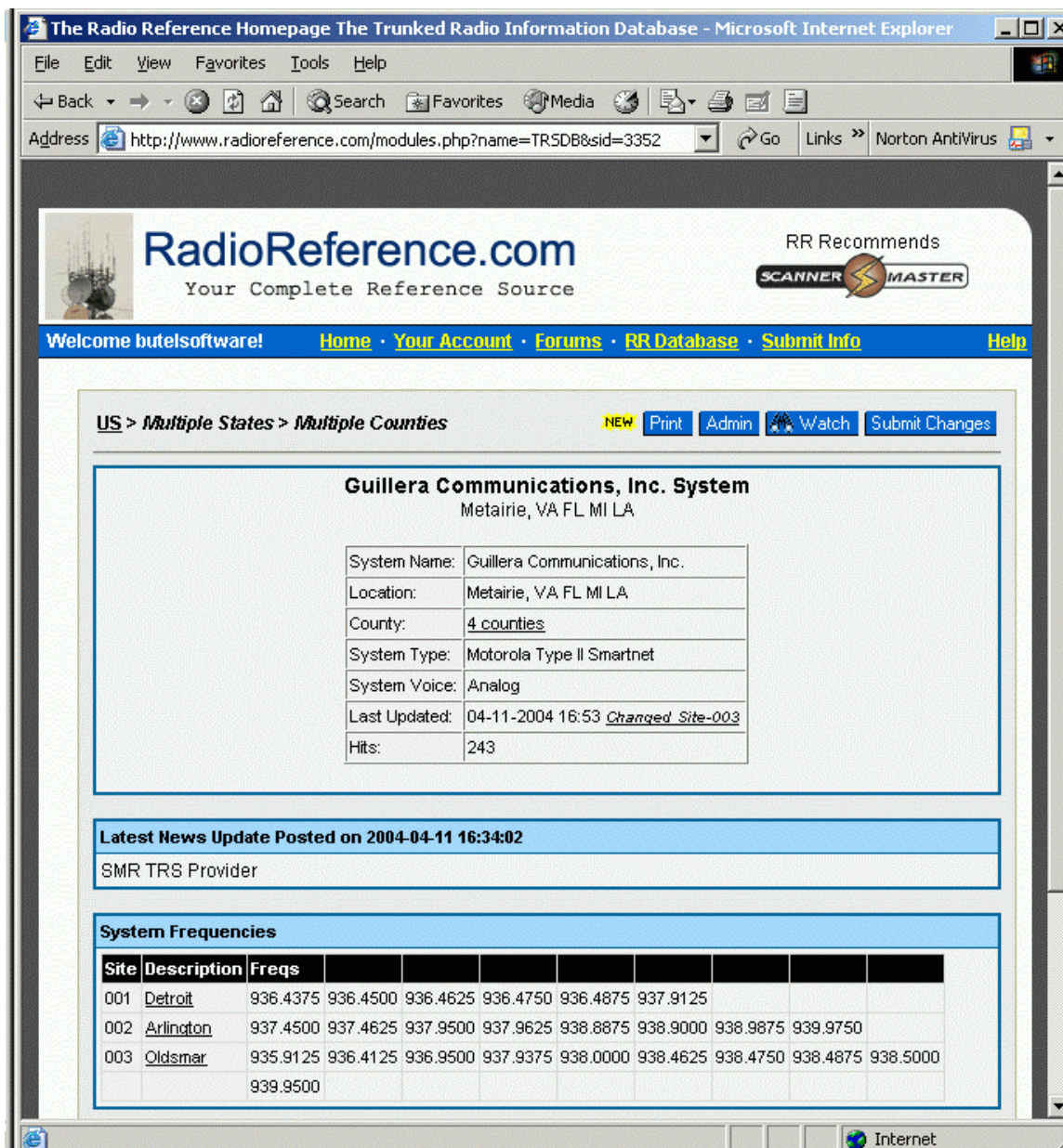
2.3.4 Pasting frequencies from a website:

While setting up trunk systems, you have probably spent a lot of time typing over frequency lists. ARC3500 has a new paste option that will do this for you.

First locate a website with trunk frequency information, in the sample we use a trunk system website found at:

<http://www.radioreference.com/modules.php?name=TRSDb&sid=3352>

We want to copy the frequencies from this website into ARC3500.



The first step is to highlight the frequencies at this website by holding down the left mouse button, then select CTRL-C or Edit _ Copy in your browser. (There are 24 frequencies used in this system)

Guillera Communications, Inc. System
Metairie, VA FL MI LA

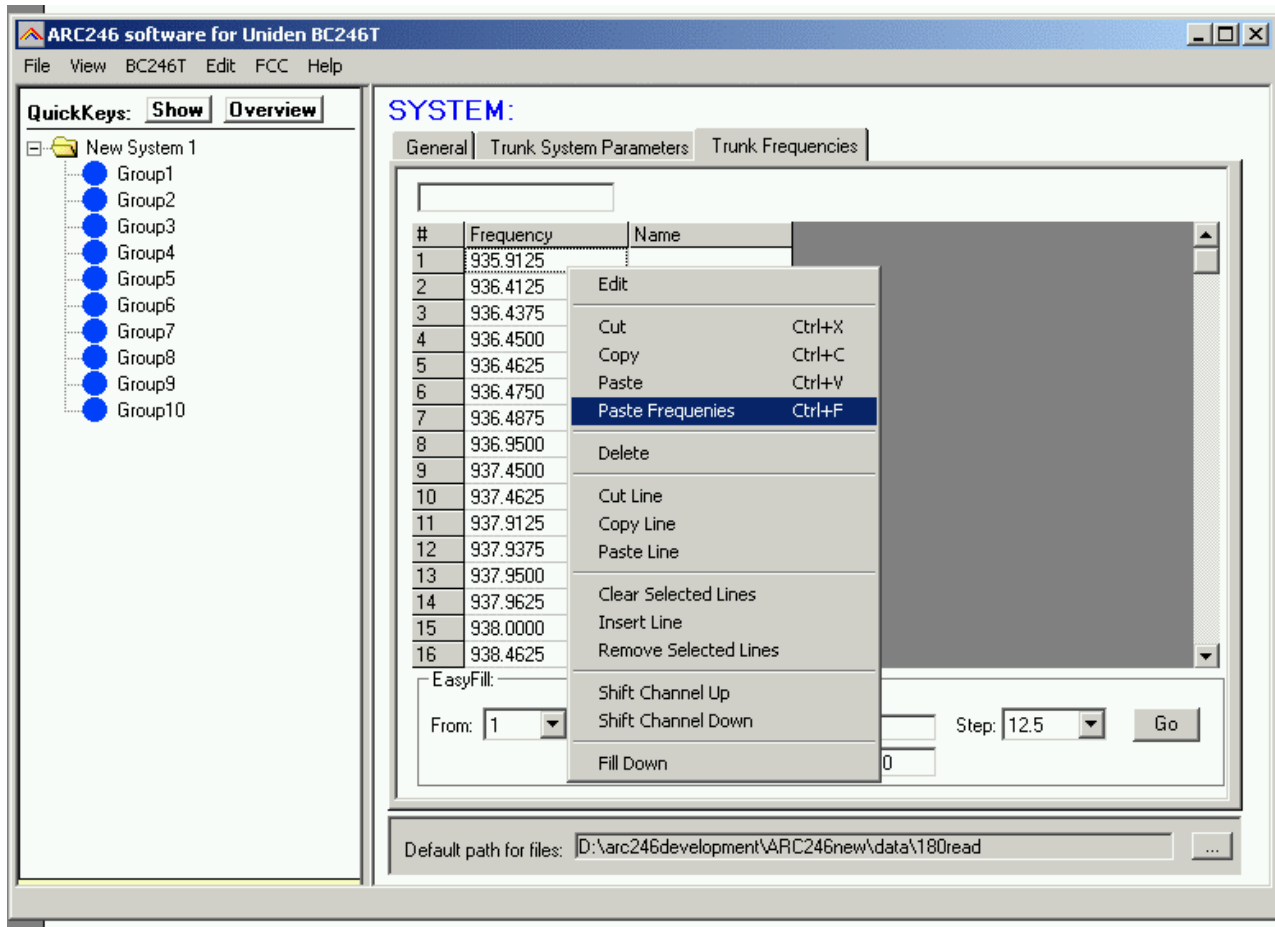
System Name:	Guillera Communications, Inc.
Location:	Metairie, VA FL MI LA
County:	4 counties
System Type:	Motorola Type II Smartnet
System Voice:	Analog
Last Updated:	04-11-2004 16:53 Changed Site-003
Hits:	243

Latest News Update Posted on 2004-04-11 16:34:02
SMR TRS Provider

System Frequencies

Site	Description	Freqs								
001	Detroit	936.4375	936.4500	936.4625	936.4750	936.4875	937.9125			
002	Arlington	937.4500	937.4625	937.9500	937.9625	938.8875	938.9000	938.9875	939.9750	
003	Oldsmar	935.9125	936.4125	936.9500	937.9375	938.0000	938.4625	938.4750	938.4875	938.5000
		939.9500								

Return to ARC3500 and in the Trunk frequency editor click the right mouse button and select 'paste frequencies' and all frequencies are pasted in the grid:



Duplicates are automatically removed. Paste Frequencies will also filter out ctcss subtones.

2.3.5 Setting Up groups in a system

After a new system is created you can setup the groups that belong to that system. In the systembrowser select 'Edit groups' from the right mouse button menu:

Grp:	Active:	Name:	Q-key:	L/O	Grp:	Active:	Name:	Q-key:	L/O
1	<input checked="" type="checkbox"/>	Group1	6	None	<input type="checkbox"/>	11		None	<input type="checkbox"/>
2	<input checked="" type="checkbox"/>	Group2	6	None	<input type="checkbox"/>	12		None	<input type="checkbox"/>
3	<input checked="" type="checkbox"/>	Group3	6	None	<input type="checkbox"/>	13		None	<input type="checkbox"/>
4	<input checked="" type="checkbox"/>	Group4	6	None	<input type="checkbox"/>	14		None	<input type="checkbox"/>
5	<input checked="" type="checkbox"/>	Group5	6	None	<input type="checkbox"/>	15		None	<input type="checkbox"/>
6	<input checked="" type="checkbox"/>	Group6	6	None	<input type="checkbox"/>	16		None	<input type="checkbox"/>
7	<input checked="" type="checkbox"/>	Group7	6	None	<input type="checkbox"/>	17		None	<input type="checkbox"/>
8	<input checked="" type="checkbox"/>	Group8	6	None	<input type="checkbox"/>	18		None	<input type="checkbox"/>
9	<input checked="" type="checkbox"/>	Group9	6	None	<input type="checkbox"/>	19		None	<input type="checkbox"/>
10	<input checked="" type="checkbox"/>	Group10	7	None	<input type="checkbox"/>	20		None	<input type="checkbox"/>

Groups:

Names:

EasyFill Name: Fill Series

QuickKey:

In this window you setup Groups:

First select the groups that you want to add to the system. This is done by clicking the 'active' box. A system can store a maximum of 20 groups.

Important: Only data of 'active' groups is stored in a systemfile. If you disable groups, the data from that group is lost.

Per group you can set a groupname, a Quickkey and the Lockout flag.

Changing number of channels:

In the main channel editor use the C+ and C- toolbar buttons to increase or decrease the number of channels per group. ARC3500 will automatically adjust the number of channels when data is pasted in a group.

Empty channels are not sent to the scanner and will not waste scanner's memory space.

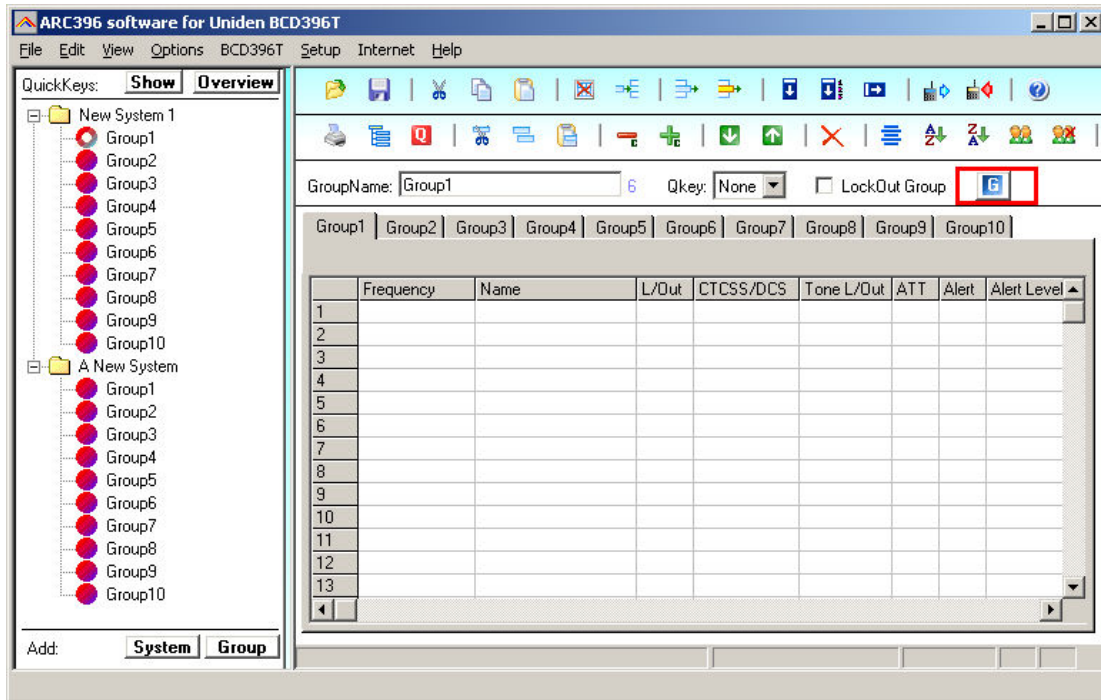
2.3.6 Adding and Deleting groups from a system:

Add a group to existing system:

Once a system is created you can also add new groups using the system browsers right mouse button menu. (Add Group). A system can only hold 20 groups.

Systems can also be added in the Group Editor (Setup _ Groups), click the active option for groups you want to add to a system.

You can also click the 'G' button in the group toolbar:

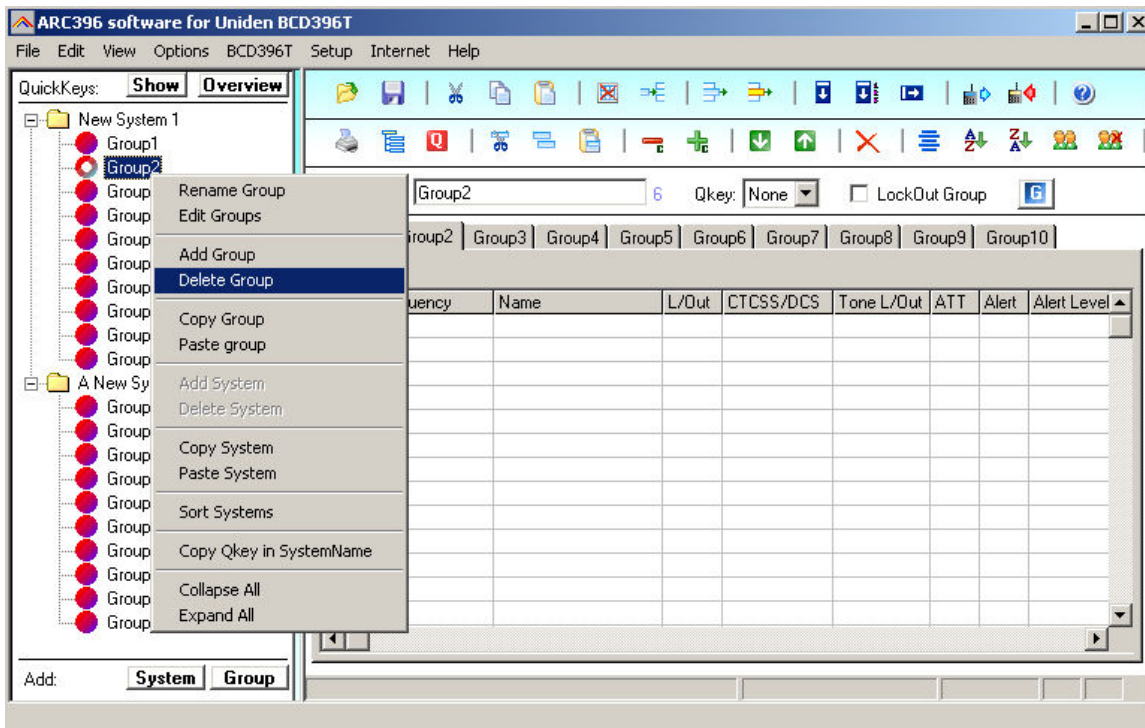


Delete a Group from a system:

Open the Group Editor (Setup _ Groups) and uncheck the 'active' option for groups you want to remove from a system.

WARNING: If there is data is stored in that group, data is lost when 'active' is unselected!

You can also use the right mouse button menu:



2.3.7 QuickSave:

Systems are stored in separate files. To avoid that you need to manually save all systems, a QuickSave option was developed.

A system file can have a different filename than the systemname!
In the 'system' editor the actual filename and location is shown.

When you select QuickSave the software first checks if a filename already exists in the software (shown in system editor screen). If there is no filename stored, the software uses the systemname as filename (only first 16 characters). If systems have the same name, the filename is automatically modified so systems with the same name will not use the same filename.

When you save a profile, the software will always first execute a Quicksave to make sure that all systems are stored in a file.

2.4 Default data:

When you enter a frequency or ID and you press ENTER the other cells of that line are automatically programmed depending on your custom settings (default channel data). You can customize the default data: select SETUP _ SETUP DEFAULT DATA. A new window is shown:



In this window you set the default data that is put in the grid when you press enter. All parameters that have the check box selected will be put in the grid. By using this option the software will take care of programming default data.

Mode and step column: By default both step and mode are set to auto, so the scanner uses the internal database to lookup mode and step.

Tip: programming your personal preferences in the default data and setup a custom bandplan will save you time while programming new frequencies/id's.

When you press <enter> the software will automatically go to the next cell.

2.5 Sort channels

Memory channels can be sorted. You can either sort ascending or descending. You can only sort within a single group. In general scanners will scan faster when channels in a bank are sorted.

Sort a range of channels: highlight the range of channels you want to sort, and then select the sort option. Only the selected range of channels will be sorted.

2.6 EasyFill



EasyFill is a simple but powerful option that lets you program data in a range of channels with only a few mouse clicks.

Additionally you can use EasyFill for quickly program a range of frequencies in a memory bank so you can use a memory as a search bank.

Select EasyFill from the Options menu or use the EasyFill toolbar button to display the EasyFill window:

In the top frame the channel range is selected. DEFAULT will set the start and end channel of the selected bank. ALL CHANNELS will set all 1000 channels.

In the 'Fill Range With' frame you select the data you want to program in that range. If you want to set the mode for all selected channels to NFM select the MODE check box then select NFM and select APPLY, this will program WFM in all selected channels. You can select more than one check box.

If the Frequency check box is selected you can set a start frequency and a step. The software will automatically calculate the frequencies for the selected channel range.

Example: Frequency is set to 88.000 MHz, step is set to 50 kHz and channel range is 1-100. If you select APPLY the software will program 88.000 in channel 1, 88.050 in channel 2, 88.100 in channel 3 etc.

Fill series: for the TAG option you can also set the fill series option. Fill series will search for a number in the tag and use that number to 'calculate' the tags in the selected channel range.

Example: in the tag box the tag is set to 'Police 1'. The channel range is set to 1-100.

If fill series is selected, the software will automatically program 'Police 1' in channel 1, 'Police 2' in channel 2, 'Police 3' in channel 3 etc. See also section 2.9.

The number of characters of the tag box is shown in blue.

2.7 Using the clipboard

In the memory editor grid you can use the standard Windows clipboard options. In the toolbar shortcuts are available for cut, copy and paste options. You can also use the keyboard shortcuts CTRL C, CTRL X and CTRL V. Use these options to paste data from other applications like Excel.



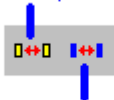
An additional clipboard option is available that will automatically select entire lines (Cut line, copy line and paste line).

To use these extra options, click any cell of a memory channel then select cut/copy/paste line. To paste in a different memory channel, select any cell in that memory channel, then select paste line, ARC3500 will automatically align the pasted text.

Important: while pasting data make sure the data is valid for the column you want to paste data. Example: you cannot paste WFM in the step column.

2.8 Copy/Move/Swap Memory channels / Groups

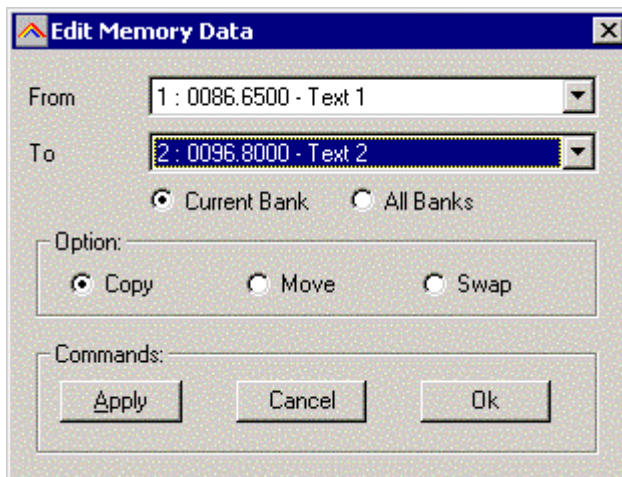
Copy/Move/Swap Memory Channels



Copy/Move/Swap Banks

Memory channels or entire groups can be easily copied, moved or swapped within a system.

2.8.1 Copy/Move/Swap Memory Channels:



The 'from' and 'to' list boxes will automatically display the channel number, frequency and tag. Channels that are empty (no frequency programmed) are indicated as Empty.

Current Bank: copy/move/swap channels in the active bank

All Banks: copy/move/swap channels in all Banks

2.8.2 Copy/Move/Swap groups within a system:



Use this window to copy/move/swap entire memory groups.

The 'Include Bank Tag' options will also copy/move/swap the bankname.

2.8.3 Copy/paste groups between systems

In the systembrowser you can copy/paste groups. Click on the group you want to copy and select the right mouse button. Select 'Copy Group'

Next select the system where you want to paste the data, and select 'Paste group' in the right click menu.

IMPORTANT: you can only copy/paste groups that are the same system type. So for example you can not copy a Motorola group into an Edacs system etc.

2.8.4 Copy/paste systems

In the systembrowser you can copy/paste systems. Click on the system you want to copy and select the right mouse button. Select 'Copy System'

Next select 'Paste System' and system will be added to the systembrowser.

2.9 Fill Down / Fill Series

The Fill down and fill series options are used to copy the same data into a range of channels. Fill series will auto calculate ascending numbers in text tags (see examples below)

This example will show fill down:

Channel 10 contains Trunk=OFF, Delay Time = 4 seconds and Record =ON

	Freq. (MHz)	Tag	Trunk	Delay Time	Record
10	0400.0000		Off	4	On
11	0400.0500				
12	0400.1000				
13	0400.1500				
14	0400.2000				
15	0400.2500				
16	0400.3000				
17	0400.3500				
18	0400.4000				
19	0400.4500				
20	0400.5000				

We want to copy this data to channels 11-20; first you must highlight the channel range:

	Freq. (MHz)	Tag	Trunk	Delay Time	Record
10	0400.0000		Off	4	On
11	0400.0500				
12	0400.1000				
13	0400.1500				
14	0400.2000				
15	0400.2500				
16	0400.3000				
17	0400.3500				
18	0400.4000				
19	0400.4500				
20	0400.5000				

Now select the FILL DOWN option:

	Freq. (MHz)	Tag	Trunk	Delay Time	Record
10	0400.0000		Off	4	On
11	0400.0500		Off	4	On
12	0400.1000		Off	4	On
13	0400.1500		Off	4	On
14	0400.2000		Off	4	On
15	0400.2500		Off	4	On
16	0400.3000		Off	4	On
17	0400.3500		Off	4	On
18	0400.4000		Off	4	On
19	0400.4500		Off	4	On
20	0400.5000		Off	4	On

The software will automatically fill the selected range, using the data at the top of the selected range.

Fill Series:

Fill series only works in the tag column. It will look for number information in the tag and auto increase the number in ascending channels.

Example: Channel 10 contains the tag 'UHF Channel 431':

	Freq. (MHz)	Tag
10	0400.0000	UHF channel 431
11	0400.0500	
12	0400.1000	
13	0400.1500	
14	0400.2000	
15	0400.2500	
16	0400.3000	
17	0400.3500	
18	0400.4000	
19	0400.4500	
20	0400.5000	

Highlight the channels where you want to copy the data to:

	Freq. (MHz)	Tag
10	0400.0000	UHF channel 431
11	0400.0500	
12	0400.1000	
13	0400.1500	
14	0400.2000	
15	0400.2500	
16	0400.3000	
17	0400.3500	
18	0400.4000	
19	0400.4500	
20	0400.5000	

Now select the FILL SERIES option and ARC3500 auto calculates the new tags:

	Freq. (MHz)	Tag
10	0400.0000	UHF channel 431
11	0400.0500	UHF channel 432
12	0400.1000	UHF channel 433
13	0400.1500	UHF channel 434
14	0400.2000	UHF channel 435
15	0400.2500	UHF channel 436
16	0400.3000	UHF channel 437
17	0400.3500	UHF channel 438
18	0400.4000	UHF channel 439
19	0400.4500	UHF channel 440
20	0400.5000	UHF channel 441

2.10 Other Options:

PL/DPL Column :

You can directly enter a CTCSS or DCS tone. The software will auto correct your entry.

Tones that are entered and have a decimal are considered CTCSS tones. Tones without a decimal are DCS tones.

Tips: You can scroll the list with subtones by using the – and + keys.

Shift _ spacebar will scroll down.

2.11 Understanding how data is stored in ARC3500

In ARC3500 data is stored in a system file or in a profile file.

System File:

Stores a single system with all related parameters:

- system settings, including systemname, systemtype, QuickKey and website.
- group settings
- channel data (frequencies and related channel parameters)

Profiles:

A profile stores a list of system filenames. A profile is 'just' a list of shortcuts to System files that can be loaded in one single operation instead of opening each a system file individually.

When you open a profile, all system files that are stored in that profile are opened.

So a profile does not contain system data, data is only stored in system files.

You can view profiles by using the Profile Creator (FILE _ Profile Creator)
Or you can open them as text file in Notepad.

Creating a new profile:

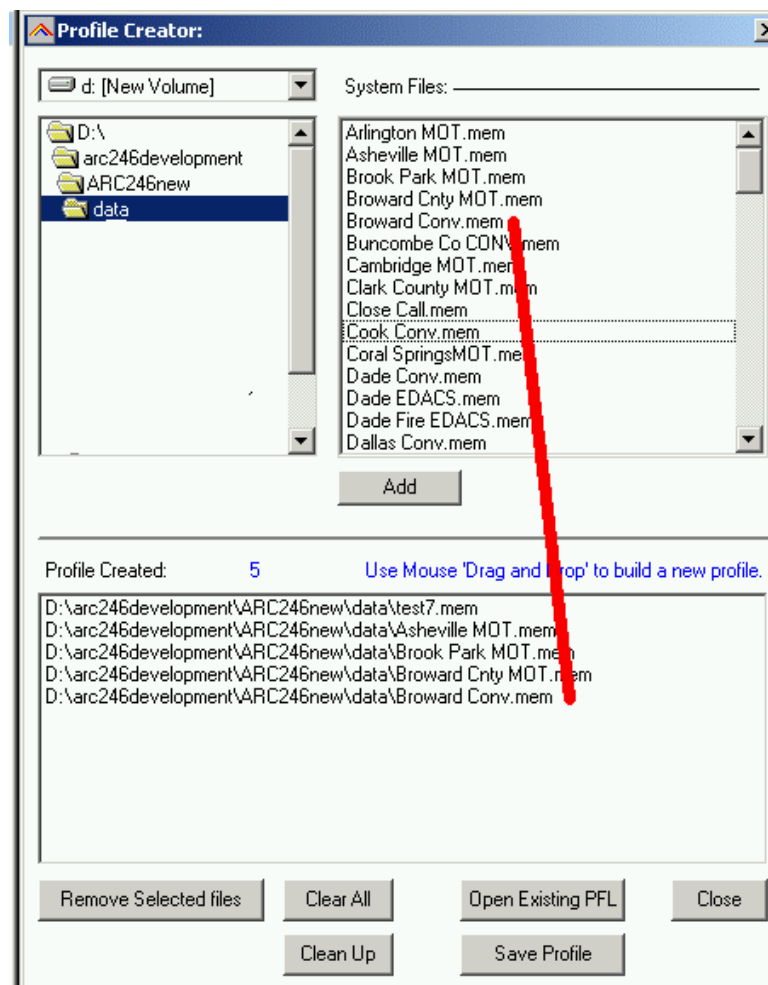
There are several ways to create a new profile:

1. Manually open all the systemfiles that you want to store in a profile. Every systemfile is added to the systembrowser. Use File Save Profile or File Save Profile As to store and create a profile.
2. Profile creator (see next item): With this utility you can browse your haddisk for systemfiles (.mem extension). The system files can be dragged and dropped into the profile.
3. read data from the scanner into the software and select FILE _ SAVE PROFILE AS. Saving a profile will automatically save your systems.

2.11.1 Viewing a Profile / Profile Creator:

The Profile Creator makes it easy to create a new profile; a profile is a collection of system files. A systemfile can be used in more than one system.

Important: Since a profile only stores the location of a systemfile and NOT the actual data, be careful when you move mem files into different folders.



Use the drive and folder navigation to locate system files (.mem) files. The lower part is the contents of the profile.

- You can drag and drop system files into the profile.
- Double clicking in the System Files section will copy a system file into the profile
- You can use Shift & CTRL buttons to make multi selections in the System Files list box.

'Import All' will import all ARC3500 mem files from the active folder (maximum is 200 files).

You can also modify existing profiles, use the Open Existing PFL button to load existing profiles.

Clean Up: if system files were moved to different folders you can use this button to clean up the profile. This option will check all files in the profile are still at their stored location. If they are moved, that system file is removed from the profile.

2.12 Organizing QuickKeys

The UBC3500XLT uses QuickKeys to 'combine' systems so they can be scanned together. Also groups within a system can be assigned to a QuickKey.

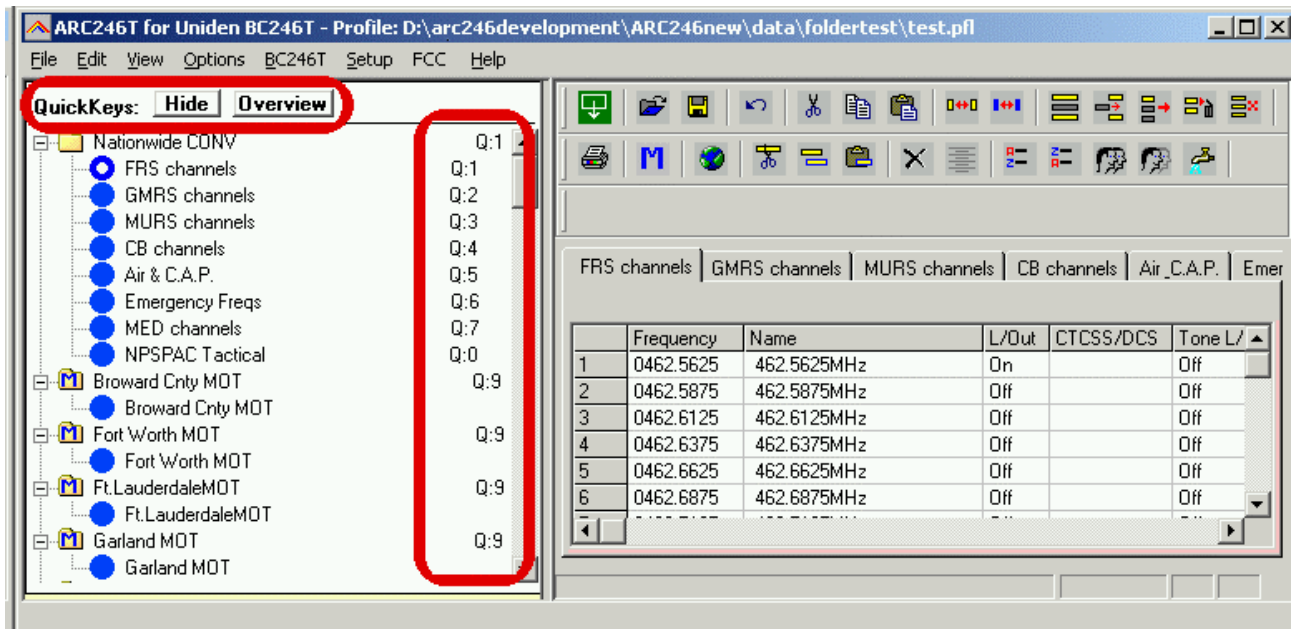
Group QuickKeys are numbers 1-9 and 0.

System QuickKeys are number 0-99 (BCD396) or 1-99 (BR330).

In the system browser you will find the QuickKey Menu with powerful options to display, print and organize your QuickKeys.

Displaying QuickKeys in the SystemBrowser:

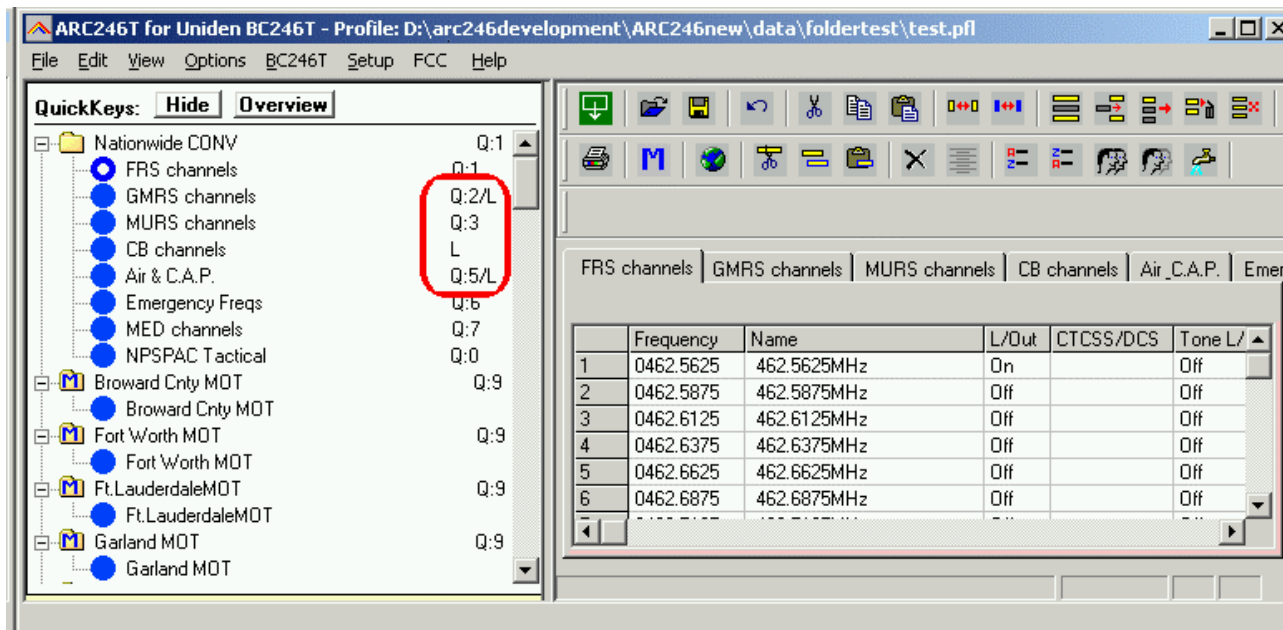
Press the 'SHOW' button and ARC3500 will add all Quickkeys to the System and Group names in the system browser:



In this sample screenshot you can see that 'Nationwide CONV' has system Quickkey 1 assigned and Group 'CB channels' has Group QuickKey 4 assigned within the system.

Press 'Hide' to remove the QuickKeys from the system browser.

Within a system you can lockout groups, these groups will not be scanned even when the assigned Quickkey is selected. To indicate that groups have the lockout flag set a 'L' is displayed in the system browser:



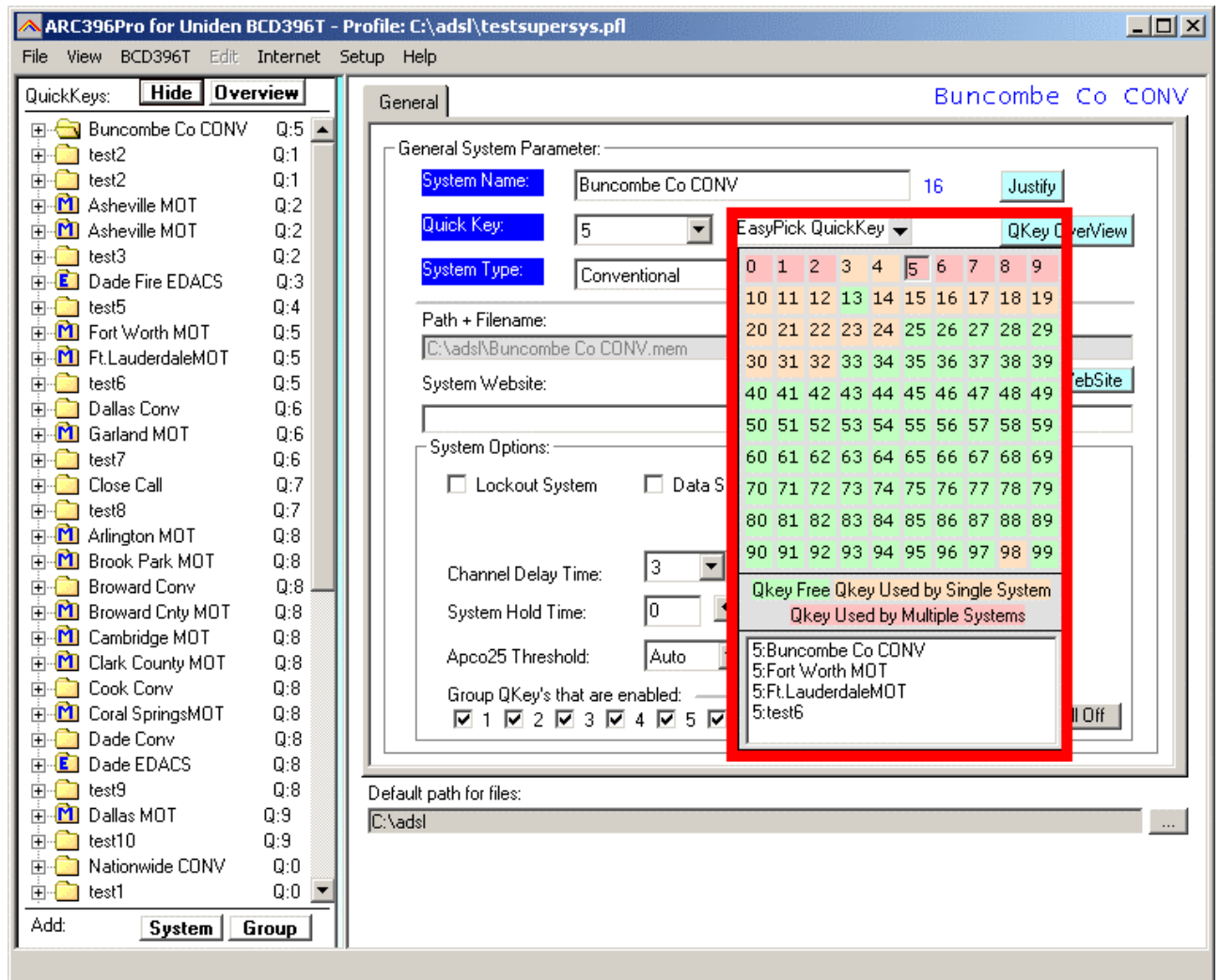
In this screenshot you can see that the 'GMRS channels' group has been assigned to QuickKey 2 but it has the Lockout parameter set so will not be scanned.

The group 'CB channels' has not been assigned to a QuickKey but has the Lockout flag set.

Group QuickKeys are set in the Group Editor. Select SETUP _ Groups in the menu to setup group names, QuickKeys and lockout flags.

To indicate that groups are empty 'E' is displayed in the system browser.

2.12.1 QuickKey EasyPick



To set a system Quickkey you can select the Quickkey number from the dropdown list. For your convenience ARC3500 shows which System Qkeys are 'free' and displays an overview of all systems assigned to a key.

Move your mouse over the 'EasyPick Quickkey' box and a popup window is shown. This window displays the actual status of all system quickkeys and the systems assigned to a quickkey:

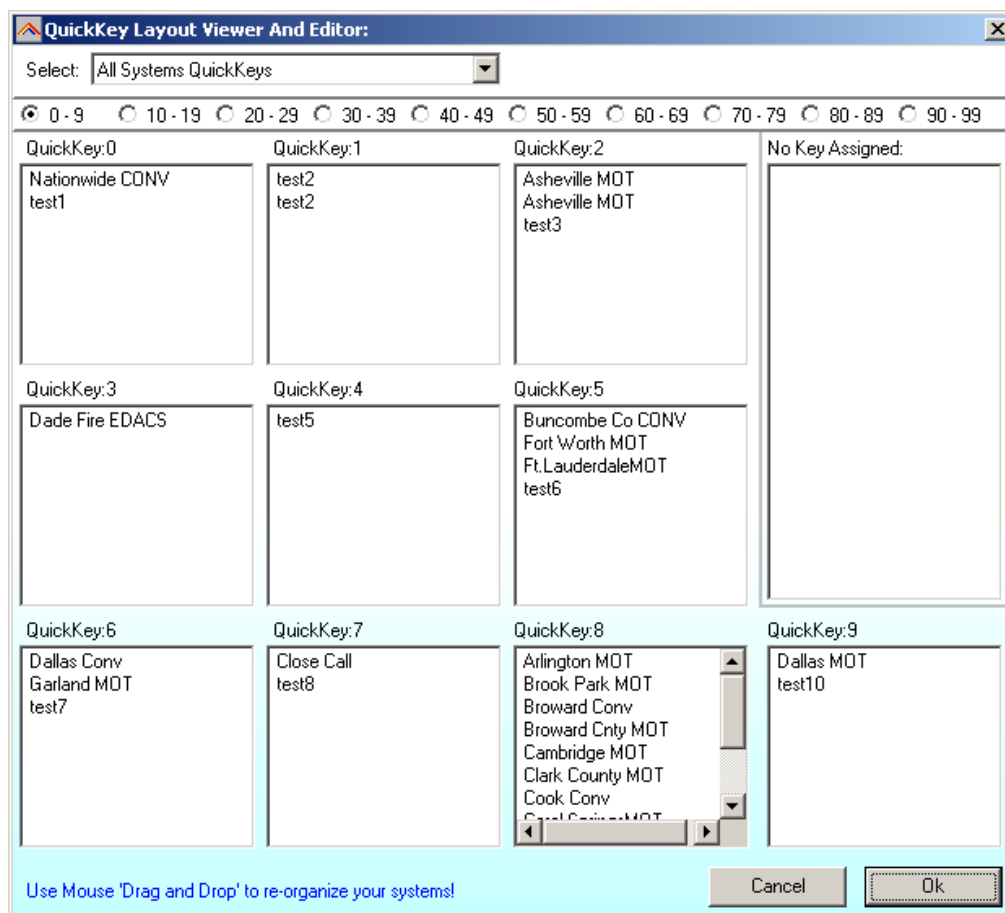
Green: Quickkey is not used by any system
 Orange: Quickkey is used by only 1 system
 Red: Quickkey is used by more than 1 system.

To **set** the quickkey **DOUBLE CLICK** the number.
 Use a single **CLICK** to view all systems assigned to a Quickkey.

2.12.2 QuickKey Overview:

Click the 'Overview' button in the Quickkeys menu to show the Quickview Overview:

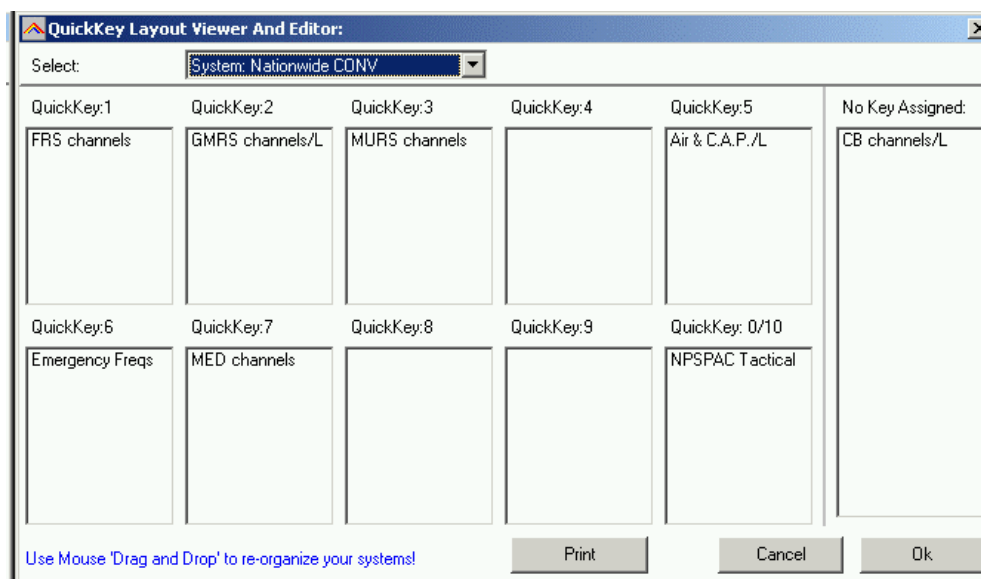
This window will show per quickkey the systems or groups that are assigned to that quickkey:



In the screenshot above you can see by Quickkey which systems are assigned to one of the quickkeys. The overview displays 10 Qkeys, there are a total of 100 System Qkeys. Use radio buttons to change the view.

You can simply use mouse drag and drop to move systems/groups into quickkeys.

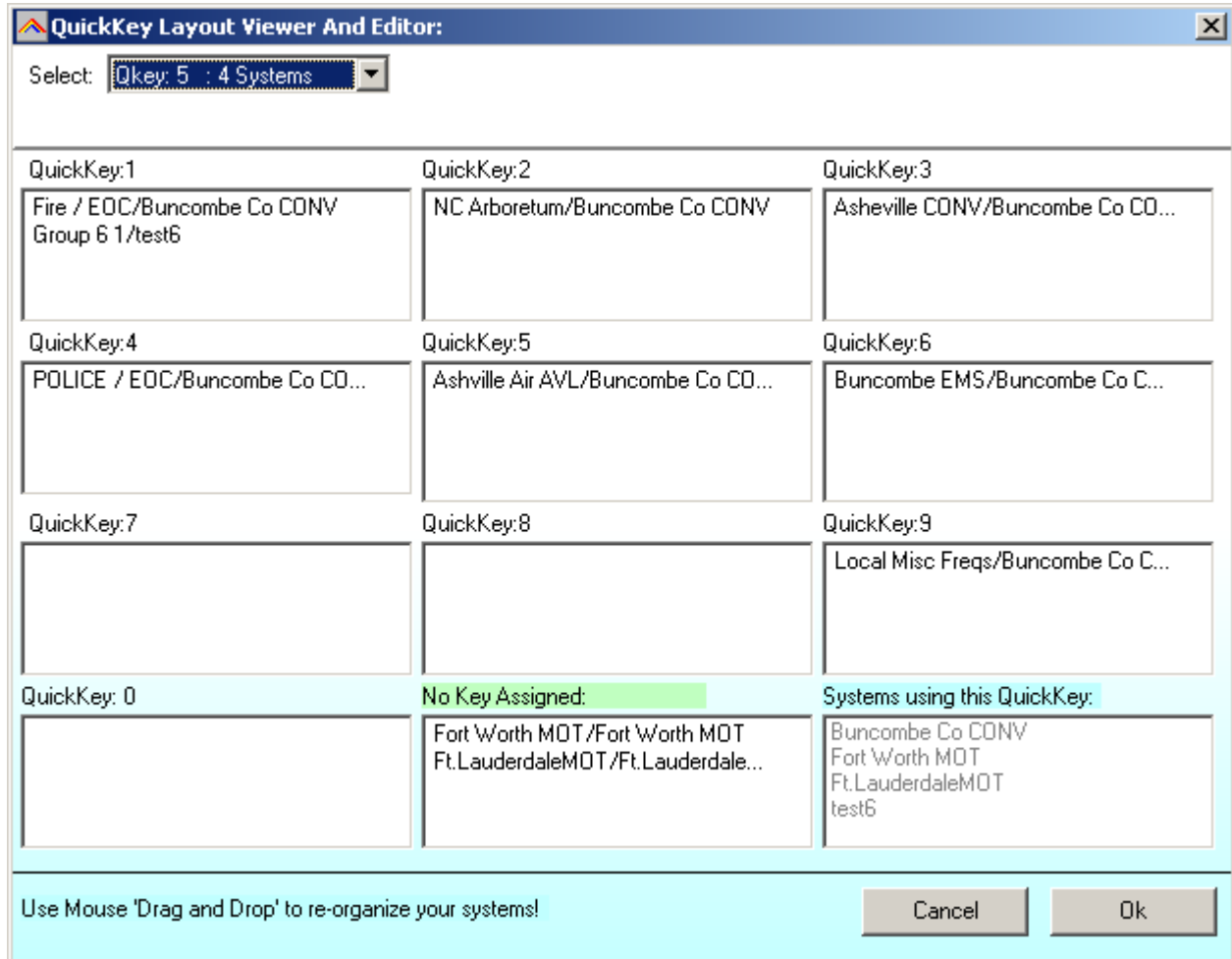
You can also view the group quickkeys per system, in the 'select' dropdown list, select the system you want to see:



You can simply use mouse drag and drop to move systems/groups into quickkeys.

2.12.3 View Groups per QuickKey

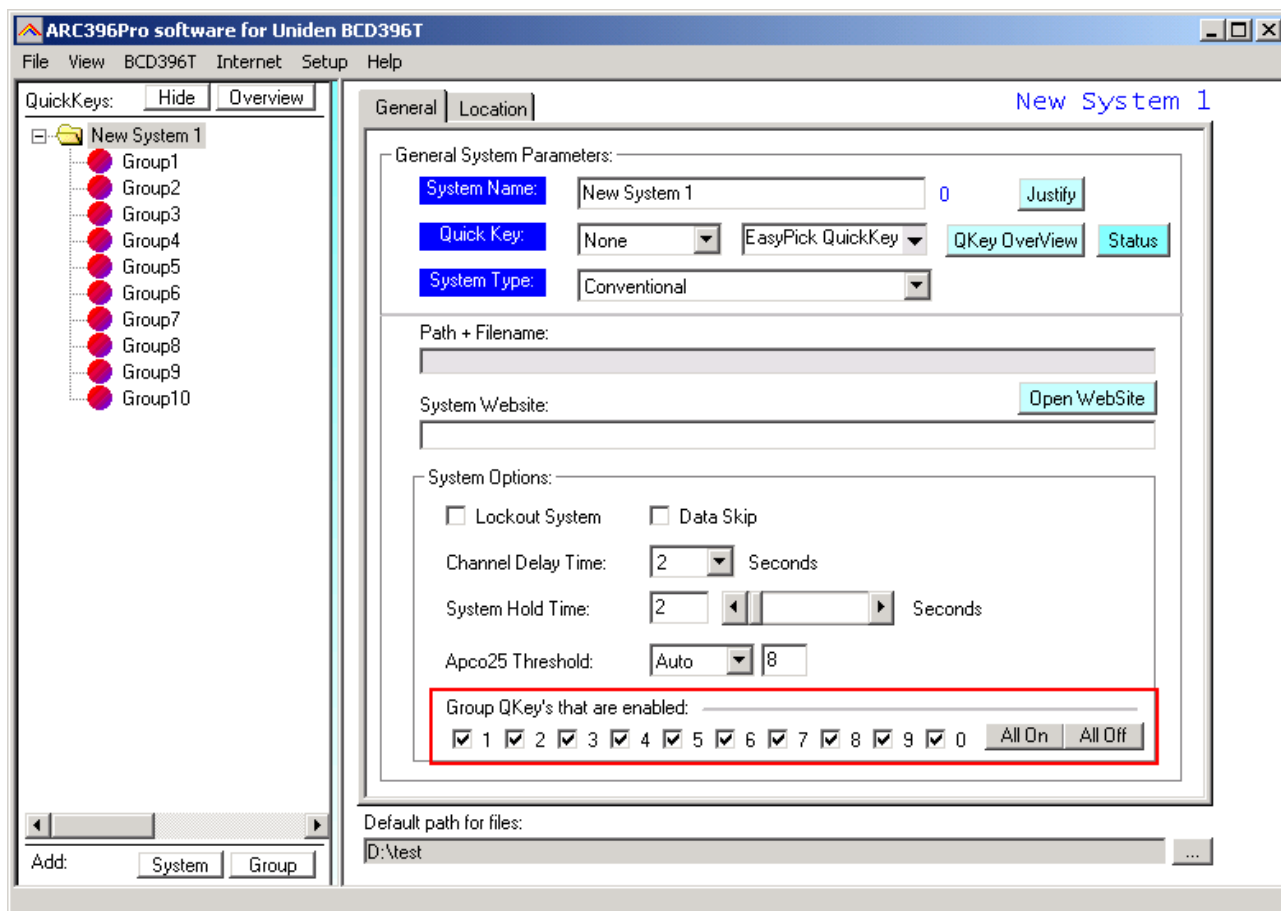
This overview will show all groups that are assigned to a System Quickkey, you can drag and drop groups to different Quickkeys. Double click 'Quickkeys' in system browser for this overview.



The select dropdown list will only show Quickkeys that are assigned to a Quickkey. You can drag and drop groups into group quickkeys. The overview also shows all the systems that are assigned to this System Quickkey.

You can simply use mouse drag and drop to move systems/groups into quickkeys.

2.12.4 Enabling/disabling Group Quickkeys



You can preset the Group Qkeys on/off status. Tick the group Qkeys that you want to enable. If the quickkey background color is red, this means the quickkey is used by a group but not enabled.

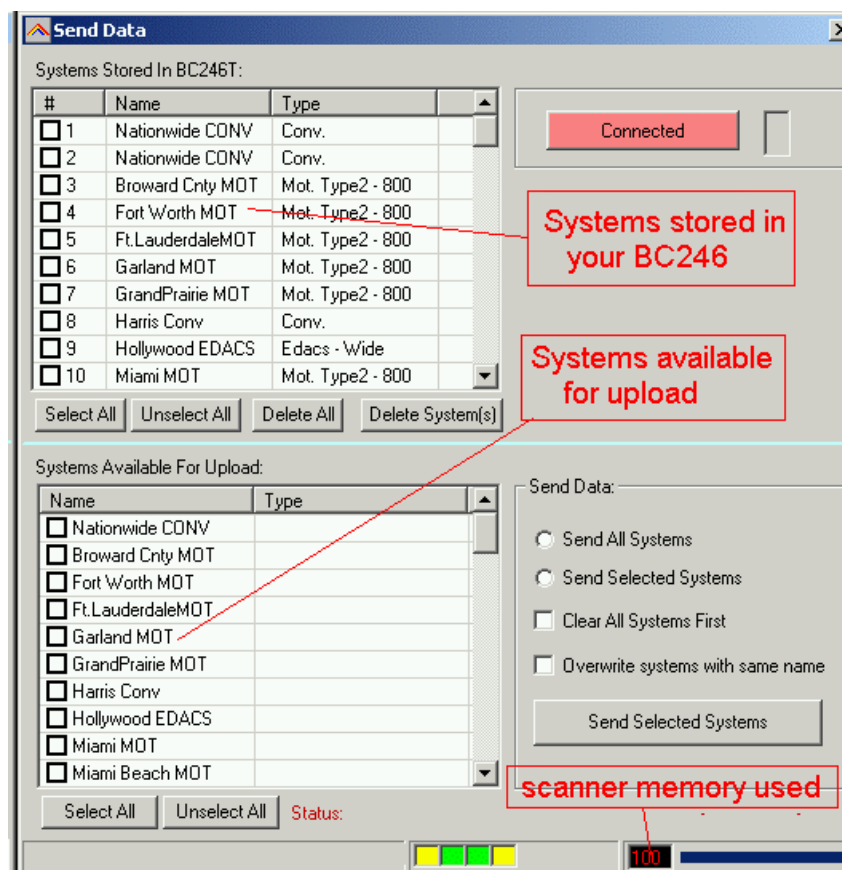
2.13: Uploading data into the scanner:

From the main menu select: UBC3500XLT _ Send Data

Tip: you can also use the toolbar button or press F6.

Empty channels are NOT sent to your UBC3500XLT.

A new window is shown:



You can upload 'All Systems' or 'Selected' systems. Make your selection in the system overview. Select All and Unselect All options are available.

Upload options:

'Clear All Systems first' : this option will erase all systems that are stored in your UBC3500XLT. It will NOT reset your scanner so 'other' data is not lost.

'Overwrite Systems with same name': select this option if you want to 'replace' systems. The software first reads the systems that are stored in your scanner. If systems in the scanner have the same name the software will first erase those systems and then upload the new data.

Sending data can take up to 10 minutes. This is not a software limitation but a limitation of the scanners 'dynamic memory management'.

2.14 Import data and UASD files:

2.14.1 Import data

ARC3500 can import data from various sources:

- import using the clipboard: you can easily copy/paste data from Excel or other database software that supports the clipboard
- import frequencies from text/html/csv files. Use the WebCatcher option to import from these files.
- CSV files: select FILE _ IMPORT _ CSV File. The csv file is opened in a grid. From the grid data can be copied/pasted into ARC3500.
- ARC3500 can import UASD files, see section 2.17

2.14.2 Import UASD files

See section 2.17

2.14.3 Batch import ARC3500 mem files

You can import all mem files stored in a folder. Select File _ Import _ Batch mem files and browse to the folder containing the mem files you want to import.

2.14.4 Export data

ARC3500 can export data:

- CSV format: Select FILE _ Export CSV data, then select the data you want to export and ARC3500 will create a CSV file
- ARC3500 fully supports the clipboard so you can copy/paste data from ARC3500 into many other applications.

2.15 Modify the software bandplan.

The UBC3500XLT has a build in Automode bandplan, this means that when you enter a frequency, the scanner will select receive mode from a preset list (see page 10-11 of UBC3500XLT user manual).

ARC3500 also uses this bandplan, by default mode of new frequencies is set to Auto. You can change this behavior.

In the system browser click on a conventional group. In the menu select SETUP _ BANDPLAN:

The screenshot shows a dialog box titled "Bandplan:" with a sub-section "Modify Software BandPlan Rules:". It contains ten rules, each with a checkbox, "From:" and "To:" frequency fields, a "use" label, and "Mode:" and "Step:" dropdown menus. Rule 1 is checked and set to "Fm" mode and "Auto" step. Rule 2 is also checked and set to "Fm" mode and "Auto" step. Rules 3 through 10 are unchecked and set to "Auto" mode and "Auto" step.

BC246T Auto Bandplan:		
Freq. Range:	Mode:	Step:
25.0-27.995	AM	5
28.0-29.800	NFM	20
29.7-49.990	NFM	10
50.0-54.000	NFM	20
108.0-136.975	AM	25
137.0-143.9875	NFM	12.5
144.0-147.995	NFM	5
148.0-150.7875	NFM	12.5
150.8-161.995	NFM	5
162.0-174.000	NFM	12.5
216.0-224.980	NFM	20
400.0-956.000	NFM	12.5
1240-1300	NFM	25

Buttons: Apply, Cancel, Ok

The STEP column is only valid for BC246T, the UBC3500XLT and UBC3500XLT do not use step settings anymore.

Here you can modify the behavior for a frequency range. Rules must be enabled before they are used by the software. The bandplan is stored and remembered.

Rules are applied from top to bottom, rules can overlap.

In this example the software will select 'FM' instead of 'NFM' for the 400.0 – 500.0 MHz range and 144.500 – 146.00 range.

For your convenience the default bandplan is shown, in Auto mode this is the bandplan that is used, in this editor you program exceptions to the standard bandplan.

2.16 Instant Firmware Updates Notification

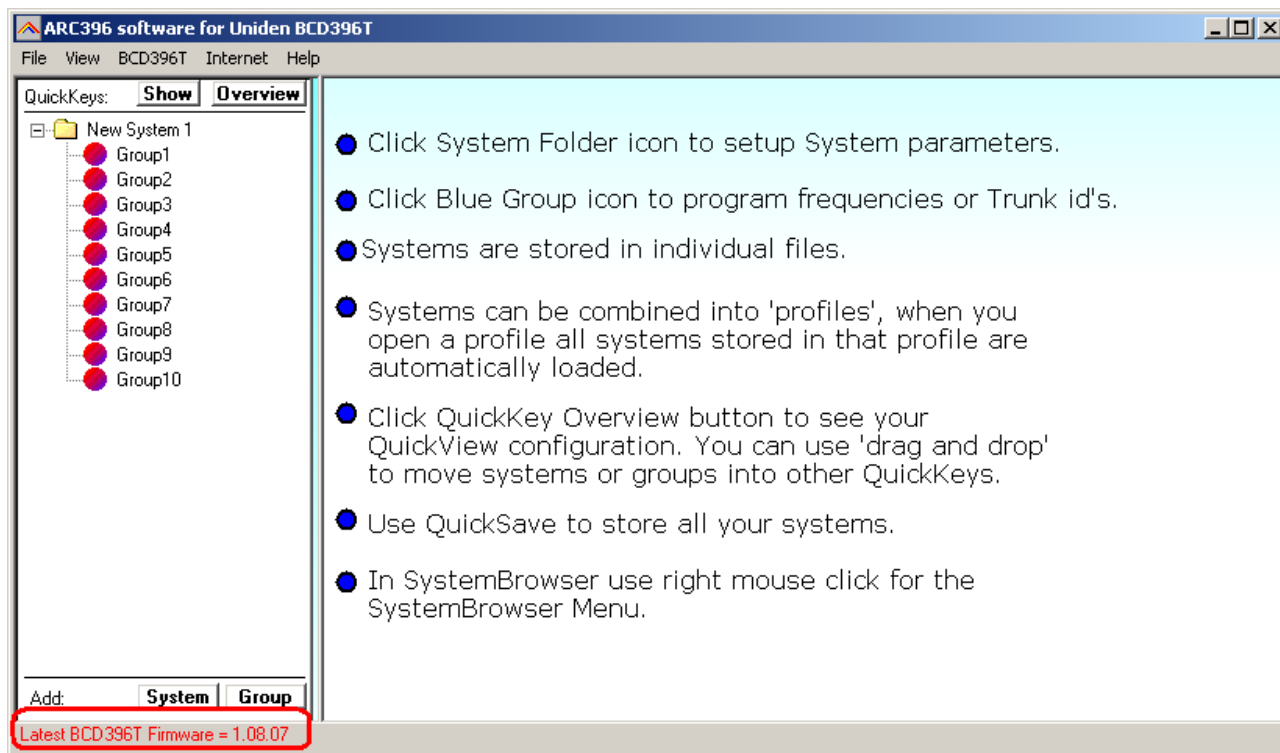
ARC3500 can automatically check for Firmware updates.

To enable this option start ARC3500 and click on a group in the systembrowser. In the menu select SETUP _ SOFTWARE OPTIONS and click the GENERAL TAB.

Select the option ' Check for Firmware Update' and now close and restart ARC3500.

If you run firewall software you must allow ARC3500 to access the internet.

If newer firmware versions are available you will see a flashing warning:



Double click the red text and the software will open the firmware download website at www.uniden.com

2.17 Opening/Importing UASD files

N/A for Uniden UBC3500XLT

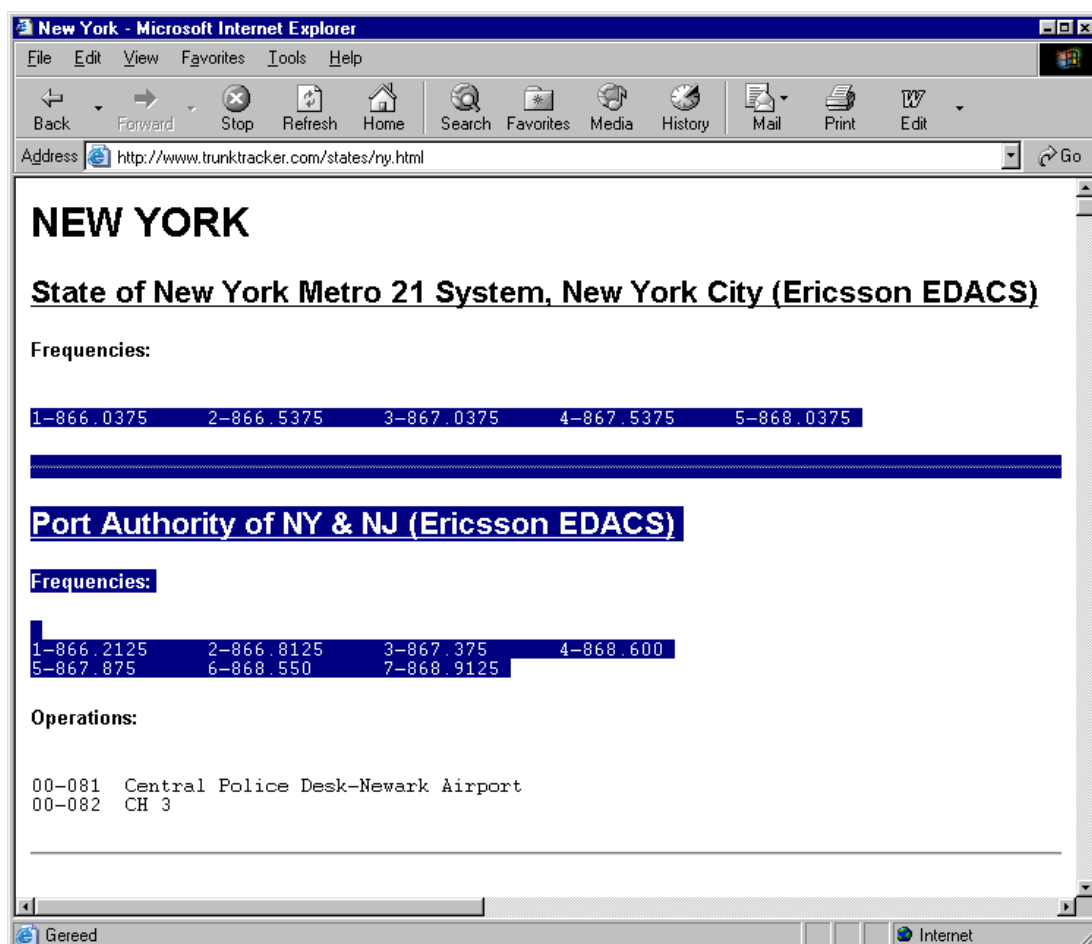
2.18 Linking Maps to a System

N/A for Uniden UBC3500XLT

3.1 Using WebCatcher for importing frequencies from internet websites:

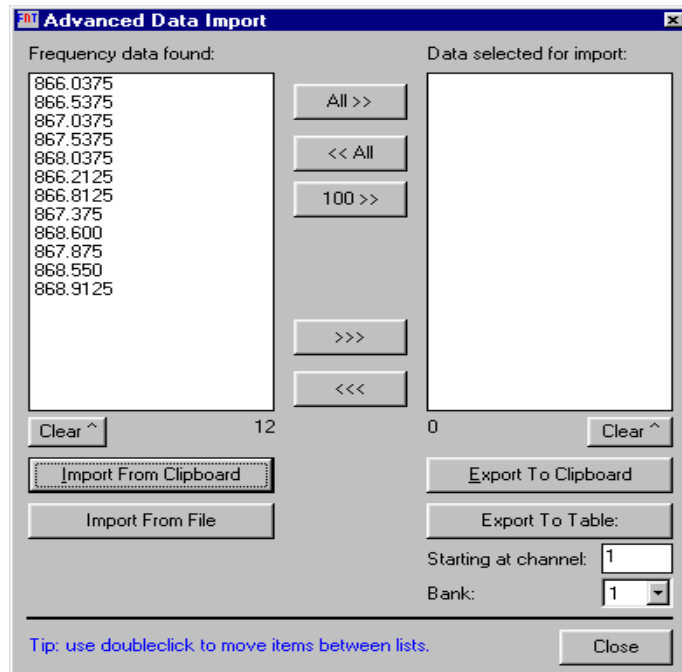
ARC3500 can very easily import frequencies from any website.

- Start the ARC3500 software
- Open you internet browser and open a website displaying frequencies you want to import (example: <http://www.trunktracker.com>)
- In your browser highlight the area you want to import:

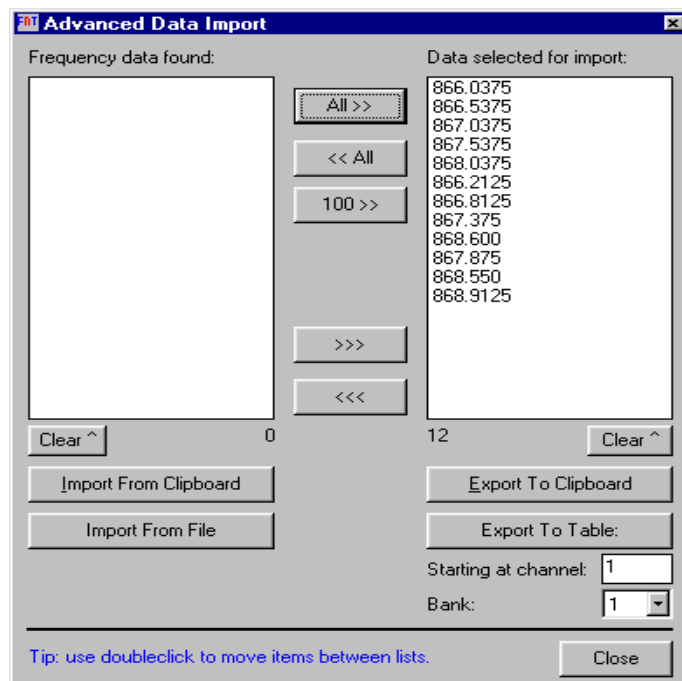


- Now you must press CTRL – C in your browser (or select EDIT _ COPY from the menu)
- Now go to ARC3500 and select FILE _ ADVANCED DATA IMPORT
- A new window is shown (see below)
- Now press the "IMPORT FROM CLIPBOARD" button.
- The software will now show the frequencies it found in the highlighted part of the website.

- ARC automatically removes duplicate frequencies:



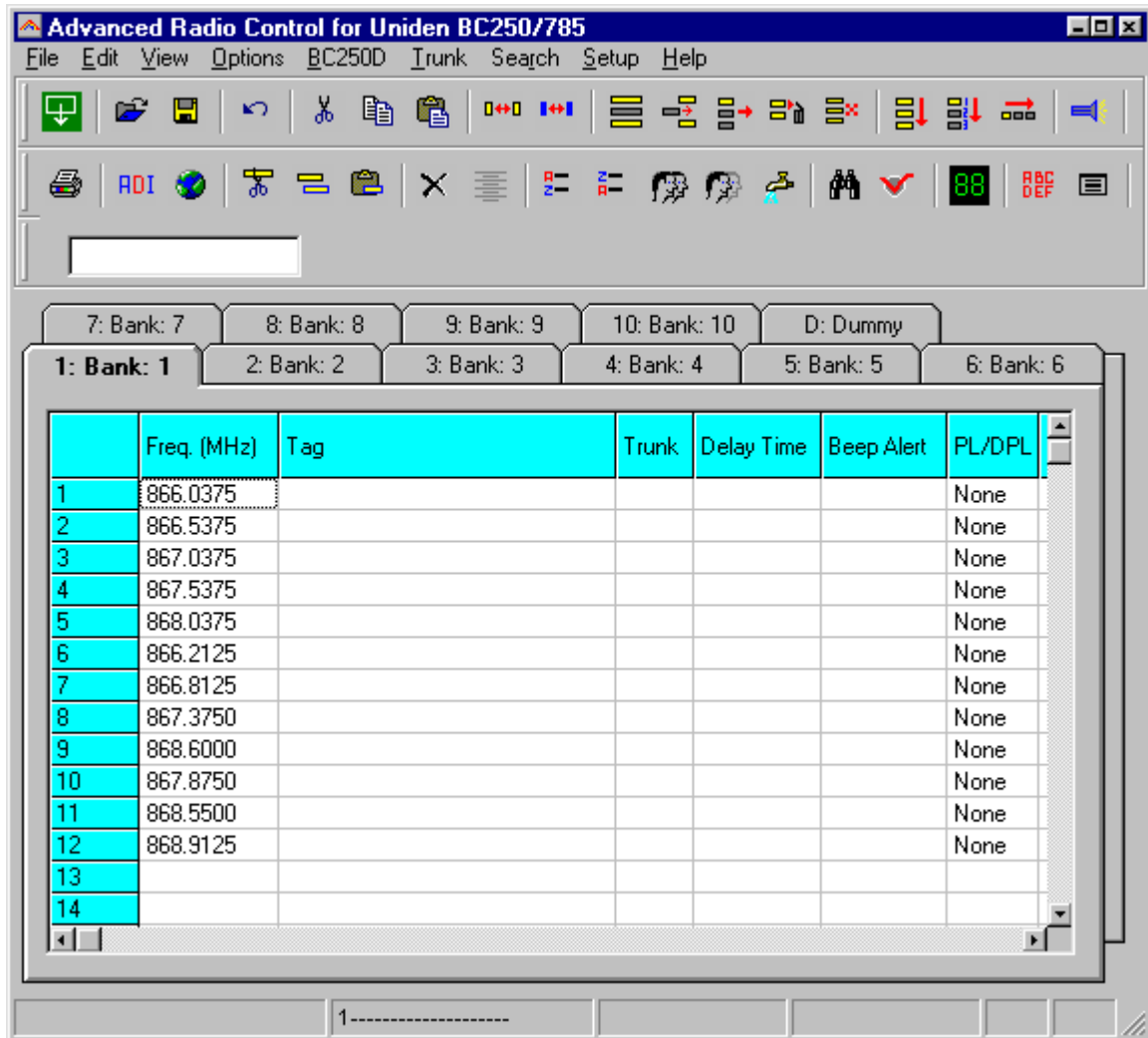
- For import into the memory table you must transfer the frequencies to the right list.
- Finally you select in what bank and at what channel you like to import the data.



- Press "EXPORT TO TABLE" button and frequencies are ready for upload!

- WebCatcher works with ANY website, the website shown above is only an example.

Here is the result of WebCatcher (screenshot was taken from ARC250):



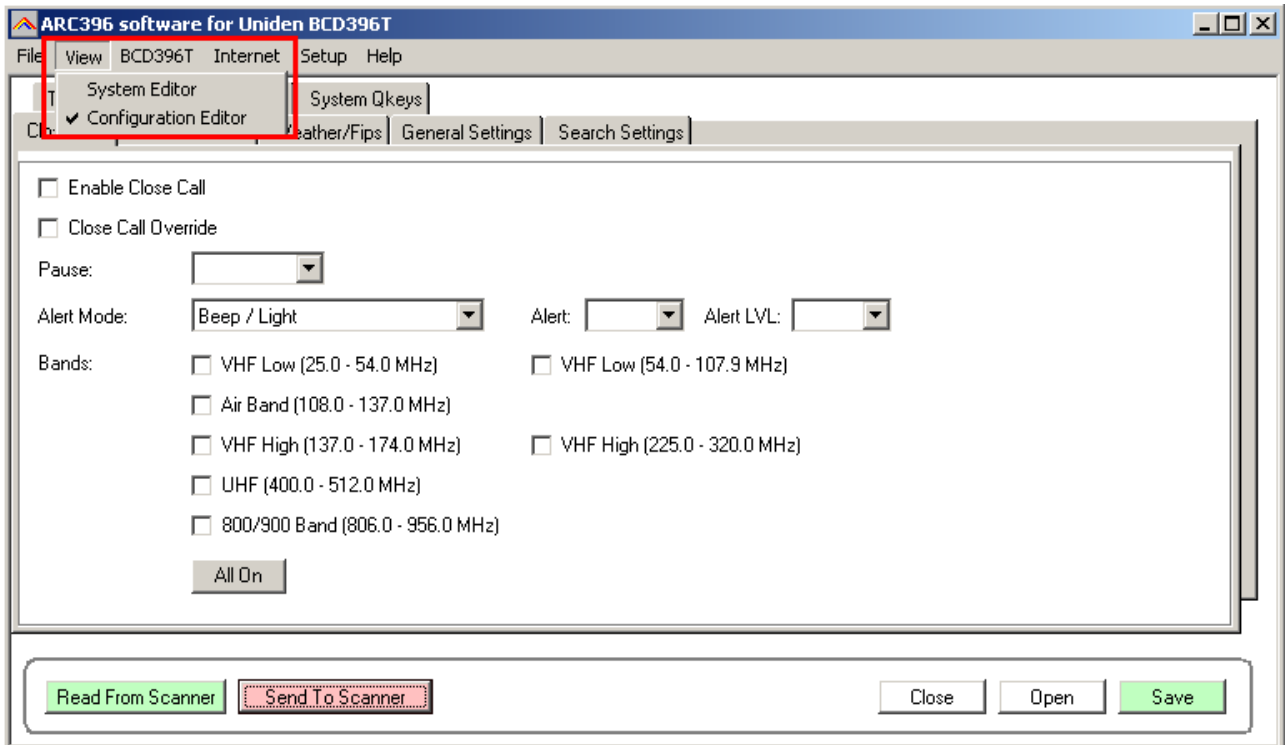
3.2 TrunkWebCatcher

. N/A for Uniden UBC3500XLT

4 Configuration parameters:

From the main menu select 'VIEW _ Configuration Editor'. If this option is not shown, click on a system in the system browser.

You can edit UBC3500XLT configuration parameters like general settings, custom search ranges and SAME settings for WX alert. See scanner user manual for more information about these parameters.

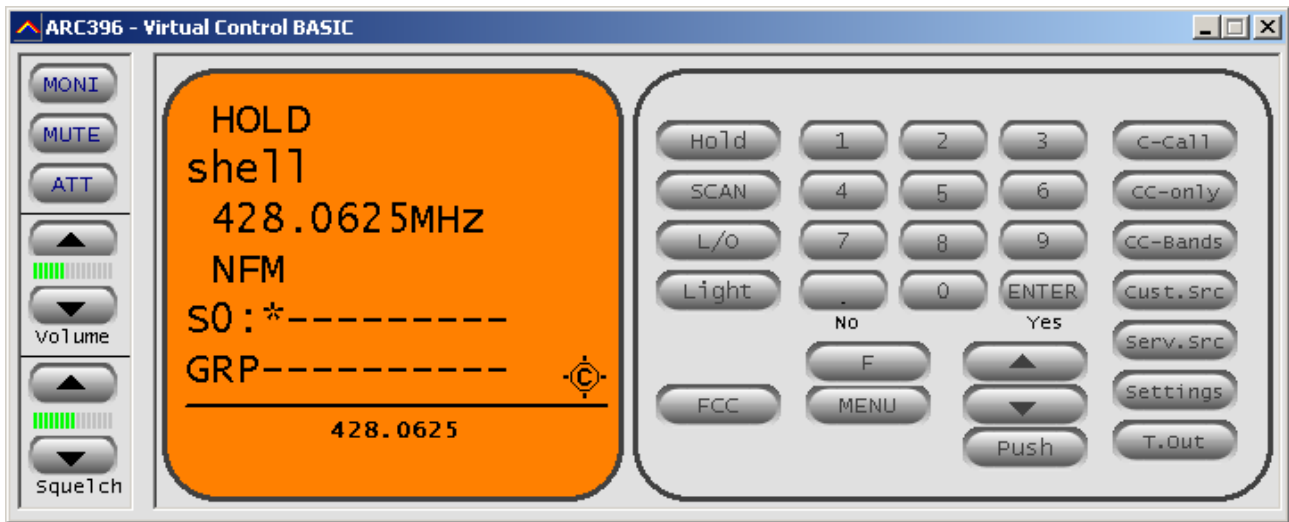


Use the Open and Save options to store configuration settings on disk.

5 Virtual Control BASIC version

ARC3500 includes a virtual control option.

Virtual control shows real-time scanner display data and you can operate the scanner from your PC keyboard using smart *shortcuts*. You can also control the volume and squelch settings.



Special options:

Use right mouse click on F button to toggle the FUNCTION option on/off.

MONI= Monitor, opens squelch (conventional mode only!)

MUTE= mutes audio

ATT= toggle attenuator on/off

C-Call/CC-Only/CC-bands/Cust.Src/Serv.Src/Settings/T.Out buttons are *shortcuts* to these items in the menu.

Use *right mouse button click* on Cust.Src and T.Out buttons to setup these options.

FCC: lookup active frequency in FCC database.

When close call is enabled, Virtual Control will automatically display the found frequency! You do not need to press a key to display close call hits.

5.1 Virtual Control: Keyboard Shortcuts

When using your scanner under virtual control, your PC keyboard has shortcuts to options in the UBC3500XLT :

PC Keyboard button:	Function:
M	Open/Close Menu
Esc (escape)	Open/Close Menu
Arrow buttons up/down left/right	Browse Menu
H	Hold/Resume scanning/searching
S, spacebar	Scan/Hold scanning/searching
Enter	E button
1-9,0	Select SYSTEM QuickKey On/Off
Shift + 1-9,0	Select GROUP QuickKey On/Off
L	Set Lockout
U	Up
D	Down
Delete	Clear entry (frequency)
F	Toggle FUNC on/off

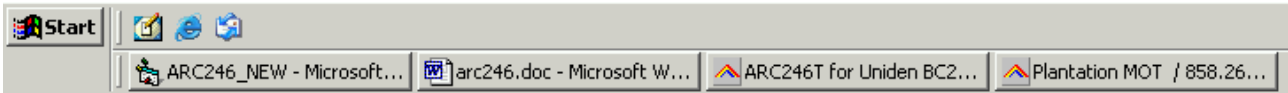
By using the ESC , Enter and arrow buttons at your PC keyboard you can easily browse the UBC3500XLT menu and set data

5.2 Resize Display:

Double click in the VC main window to toggle between 2 (BASIC) or 3 (PRO) different screen sizes.

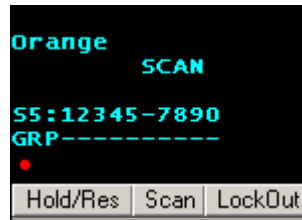
5.3.1 VC minimized:

If you minimize virtual control, your windows toolbar will display the first 2 lines of the scanner display (depending on space available):



Also 2 different 'mini' Windows are shown. Double click the mini window to toggle between them.

Mini Window 1:



Displays all display information. To control the scanner 3 buttons (Hold / Resume Scan and Lockout) are available. These buttons are automatically hidden. If you move the mouse over the mini window the buttons are automatically shown.

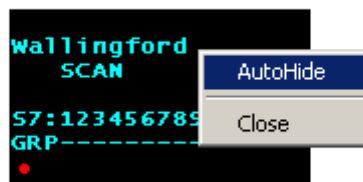
To close hit right mouse button and select 'Close'

Mini Window2:



A small window showing only the 2 top rows of the display. Double click the 'X' to close this mini window.

Autohide: right click in the mini window:



Select 'Autohide' if you want to hide the mini window when squelch is closed.

Mini window position:

By holding down the right mouse button you can drag the window to any position.

The mini windows have an autohide option. Use right mouse button menu to enabled autohide. Autohide will hide the mini windows when squelch is closed.

5.3.2 Virtual Control BackColor

In VC click the right mouse button and a popup menu is shown. Select "Set Display Backcolor" to change the color.

5.3.3 Virtual Control 'on top'

In VC click the right mouse button and a popup menu is shown. Select "Window On Top" and VC screen will be shown on top of other windows

5.3.4 Virtual Control Font Bold

In VC click the right mouse button and a popup menu is shown. Select "Font Bold" to change font to bold. Uncheck option to return to normal font.

5.4 Extra Options in ARC3500 PRO

5.4.1 History Logging:

The screenshot displays the ARC3500 PRO software interface. The top window, titled 'ARC396 - Virtual Control PRO', features a central orange display area showing 'shell', 'ID:720', '428.4125', 'S0:-----', 'GRP-----', 'BUSY 428.4125', and 'RECORDING'. To the left are control buttons for MONI, MUTE, ATT, and volume controls. To the right is a virtual keypad with buttons for Hold, SCAN, L/O, Light, FCC, MENU, and various numeric and function keys. Below the control panel is a 'History Logging' section with tabs for 'Recording', 'Log Settings', and 'Emergency'. It includes 'Save Log' and 'Clear Log' buttons and a table of logging data.

-	System/Group	Frequency	ID	Subtone	HitCount	Name	Time	Date
LOG	shell/	428.0625	720		3		07:42:52	09-13-2005
LOG	shell/	428.3750	1360		8		07:35:18	09-13-2005
LOG	shell/	428.3375	1968		2		07:25:56	09-13-2005
LOG	shell/	428.3750	10112		1		07:25:48	09-13-2005
LOG	shell/	428.0625	1808		1		07:25:45	09-13-2005
LOG	shell/	428.2000	1872		13		07:25:38	09-13-2005
LOG	shell/Group2	428.0625	1680		3	tag1680	07:24:42	09-13-2005
LOG	shell/	428.3375	3920		1		07:24:20	09-13-2005
LOG	shell/	428.3375	34640		1		07:24:05	09-13-2005
LOG	shell/	428.4125	2000		9		07:23:49	09-13-2005
LOG	shell/Group2	428.0625	176		2	tag176	07:23:44	09-13-2005
LOG	shell/	428.2000	3728		1		07:23:36	09-13-2005
LOG	shell/	000.0000	1664		1		07:23:22	09-13-2005
LOG	shell/Group2	428.0625	336		1	tag336	07:21:27	09-13-2005

In ARC3500 PRO a history logger will log all activity. This includes detected subtones and close call hits. Use 'Save Log' to save the history to disk.

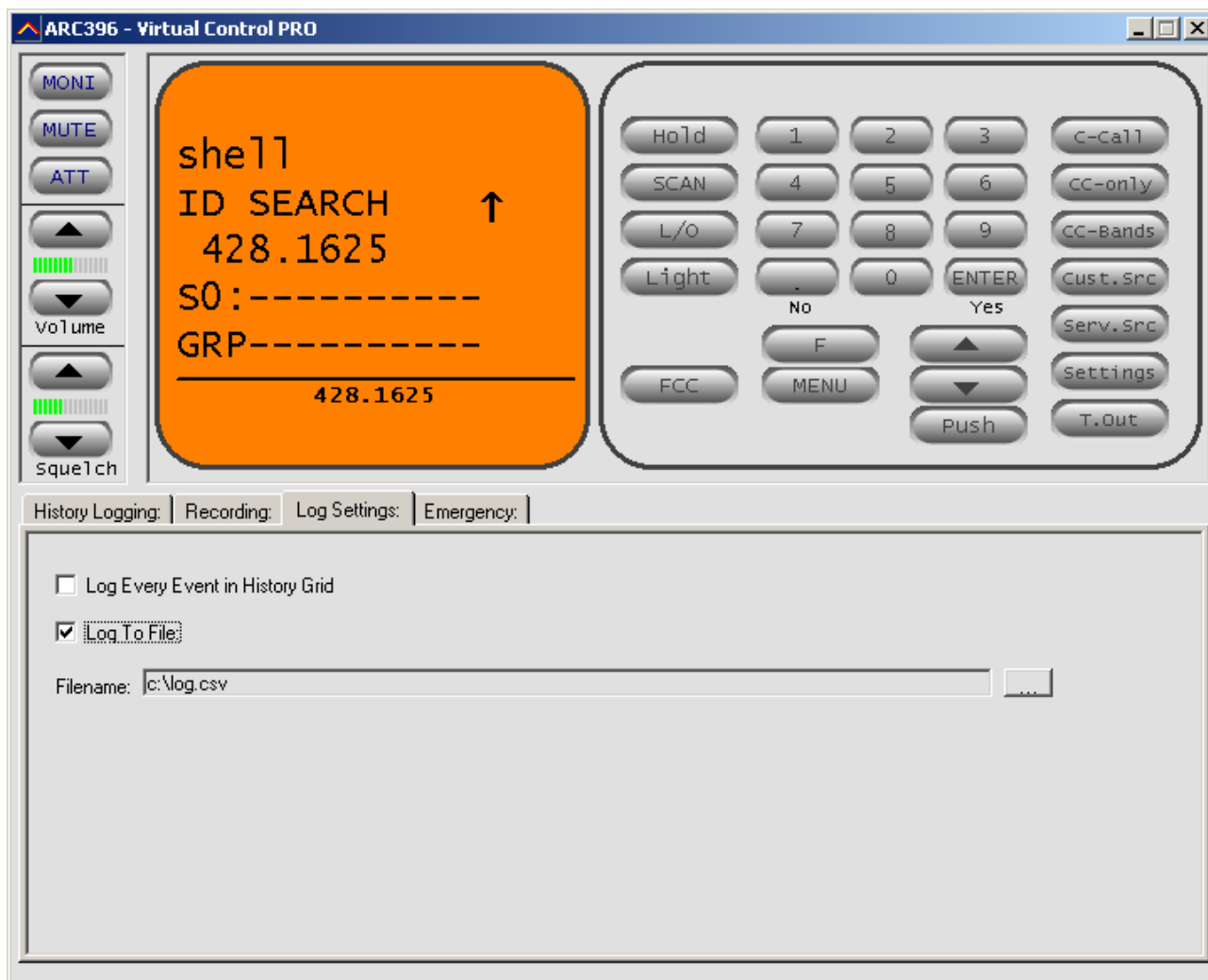
5.4.2 Recording:

If you connect the UBC3500XLT speaker output to the line input of your pc's soundcard you can automatically record audio to disk in wav format (see section 8)

The audio files are automatically saved in the 'audio' folder.

ARC3500 uses 'zero-loss' recording, unlike other software, no audio information is lost at the beginning of the recording. To playback audio files, use the Windows Media player. You can easily drag and drop files in the Media player playlist section.

5.4.3 Log Settings: (PRO VERSION)



Log Every Event: click this box to write a line in the history grid for every event. If box is unchecked the software will only increase the hitcounter and last event is moved to top of history list.

Log To File: Writes the log in a csv compatible file. Press ... button to set filename and path.

5.4.4 Emergency: (PRO VERSION)

N/A for Uniden UBC3500XLT

6 FCC lookup

N/A for Uniden UBC3500XLT

8 General information and troubleshooting

8.1 Troubleshooting communication problems

In case of communication problems you can use the information in this section to troubleshoot communication problems.

8.1.1 Set/Check scanner communication settings:

Switch on your scanner, verify the scanner is enabled for RS232 serial communication:

Press MENU, select 'Xfer Information' 'PC Control' and select 57800 **and press E to store this setting.**

8.1.2 Check your cable

The UBC3500XLT requires an optional serial cable available at www.butelsoftware.com. Connect the cable directly to your PC serial port (9 pin male connector). If you use extra cables remove them and connect your scanner directly to your PC. **Also check cable is properly plugged in the scanner.**

8.1.3 Other serial drivers:

If you also use the serial port for programming your PDA/PALM/POCKET PC or mobile phone (GSM), there may be resident software that constantly polls the serial ports. Disable any PDA/mobile phone programming software; they may interfere with the scanner serial communication.

8.1.4 Serial/USB devices:

Use the USB1 cable if your PC does not have a serial port

8.1.5 Use the ARC3500 Autodetect option:

The ARC3500 autodetect option has been well tested. Connect your scanner using the supplied cable, switch on your scanner and set serial communication to 57800 (see 8.1.1), and then select autodetect.

8.1.6 Comm error 8018:

Communication error number 8018 will occur when other software is already controlling the selected comport. This error means that ARC3500 cannot get access to the selected comport usually because other software has control over the comport. Close the other software.

8.2 Revision history:

1.00 November 2006 First release

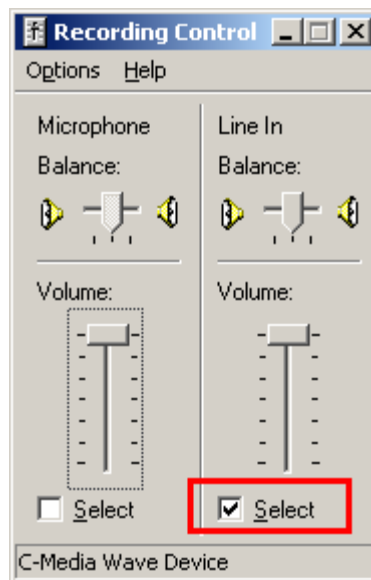
8.3 ARC3500 Pro connecting the scanner to your soundcard

ARC3500 PRO has a built in digital audio recorder. To use this option you must connect the speaker/headphone output (1/8" mono connector) to your soundcard line in (usually a light green connector).



Also you must setup the recording volume in Windows:

- start ARC3500 PRO and start the virtual control
- Click on the Recording tab and press the 'Set Recording Volume' button:



In this window make sure that the Line-In is selected. Now you can set the recording volume by moving the Volume slider.